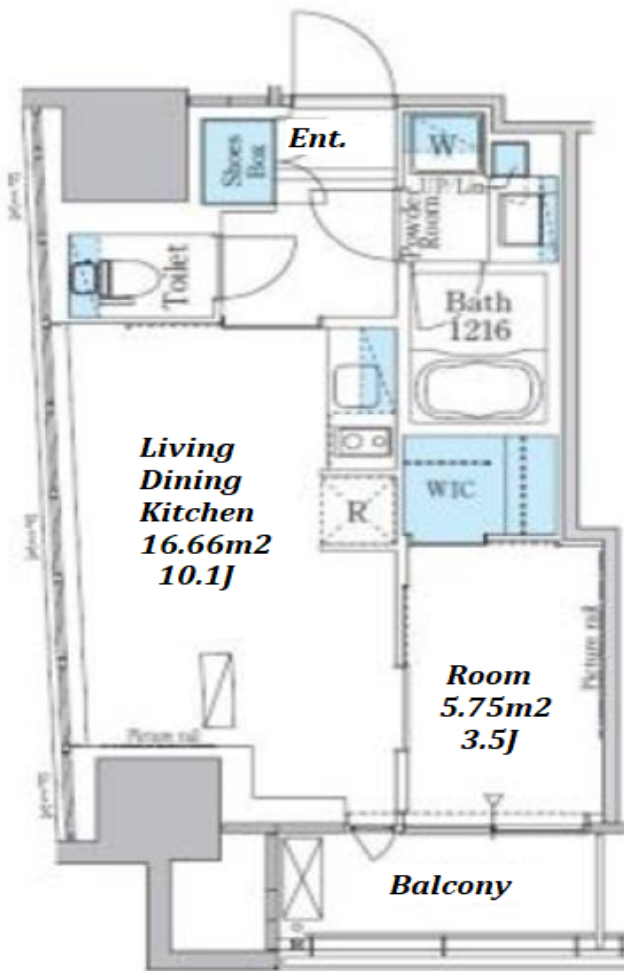
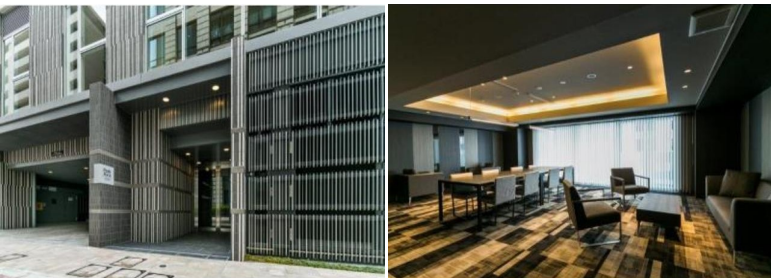


Property Name	PARK AXIS YOKOHAMA KANNAI SQUARE	Unit No.	TYPE	Access	Kannnai Station on JR Negishi Line (4 min)
		814	Apt.		
Address	3-63-1, Aioicho, Naka-Ku, Yokohama-Shi, Kanagawa				

Modern stylish apt. in Kannnai, Yokohama



*The actual Layout & Size may differ slightly from this floor plans & pictures.

Lease Conditions		
LAYOUT	1 BR	
SIZE	36.71 m ² /395.14 ft ²	
RENT	JPY 183,000 / month	
Management Fee	JPY12,000/month	
Deposit	2 months	Key Money 1 month
Lease Term	Standard lease for 24 months	
Available	End, Aug, 2024	
Renewal Fee	1 month	
Agent Fee	1 month + tax	
Other Info	Guarantor Company : TBC / Auto lock / Air-Con / Separated Toilet / Balcony / Musical Instrument Negotiable / Flooring / Bathroom dryer / WIC	

Building Information		
Completion	Jun, 2016	Earthquake Resistance New
Structure	RC, 15 floors above and 1 basement floors	
Car Parking	extra charge	
Bicycle Parking	TBC	
Music Instrument	Negotiable	Pet Negotiable
Facilities	Motorcycle Parking (TBC) / Delivery box / Elevator	

Remarks
Renters Insurance : Required / Key replacement: extra charge / Bicycle parking : Registration fee: JPY.1,000+tax



HOUSEREP TOKYO INC.

ハウスレップトーキョー株式会社

#301, 1-4-15, Hiroo, Shibuya-ku, Tokyo 150-0012, Japan

+81 (0)3 6427 5860

inquiry@housserrep-tokyo.com

Transaction Type : Intermediate

Agent Fee : 1 month + tax

Website : www.housserrep-tokyo.com

