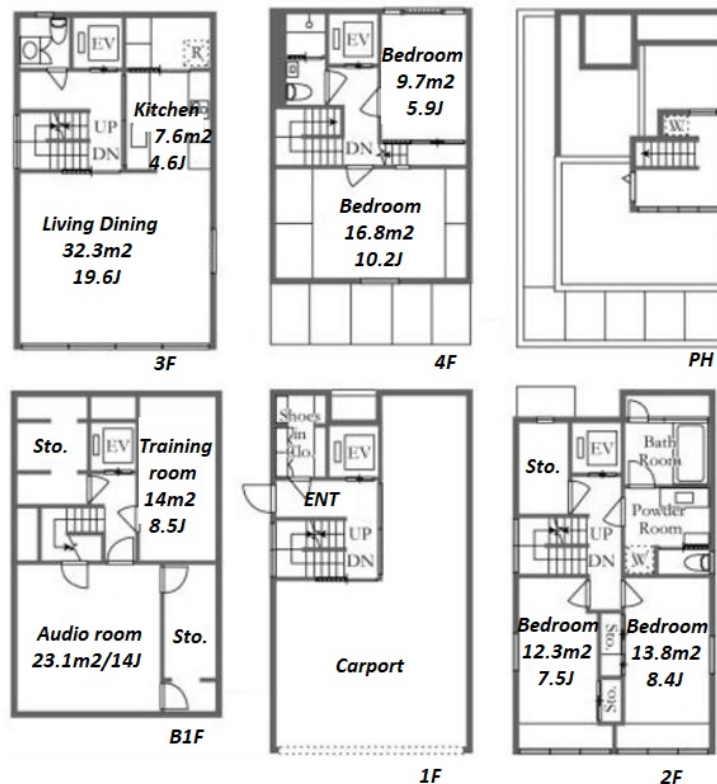
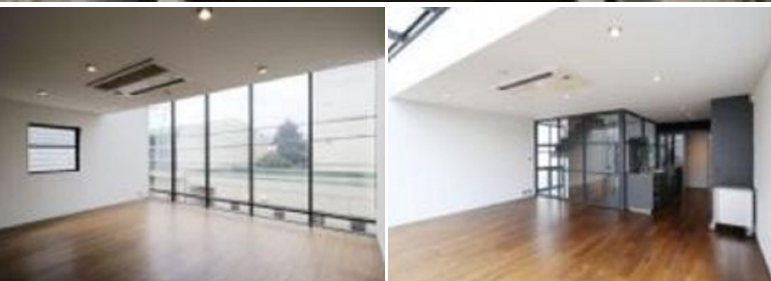


Property Name	MINAMIYUKIGAYA 310 HOUSE	Unit No.	TYPE	Access	Yukigayaotsuka Station on Tokyu Ikegami Line (9 min) Ishikawadai Station on Tokyu Ikegami Line (9 min) Dennennchoufu Station on Toyoko Line (28 min)
			House		
Address	3-10-18, Minamiyukigaya, Ota-Ku, Tokyo				



Lease Conditions

LAYOUT	4 BR		
SIZE	321.26 m ² /3458.01 ft ²		
RENT	JPY 1,150,000 / month		
Management Fee	-		
Deposit	2 months	Key Money	1 month
Lease Term	Fixed term lease for 36 months		
Available	Now		
Renewal Fee	-		
Agent Fee	1 month + tax		
Other Info	Air-Con / 2+ bathrooms / Floor Heating / IH Stoves / 2 Toilets		

Building Information

Completion	Oct, 2007	Earthquake Resistance	New
Structure	RC, 5 floors above and 1 basement floors		
Car Parking	for 3 spaces (Included)		
Bicycle Parking	-		
Music Instrument	-	Pet	Allowed
Facilities	House / Elevator / Security		

Remarks

Renters Insurance : Required / Pet:additional deposit (1 month)

*The actual Layout & Size may differ slightly from this floor plans & pictures.



HOUSEREP TOKYO INC.

ハウスレップトーキョー株式会社

#301, 1-4-15, Hiroo, Shibuya-ku, Tokyo 150-0012, Japan

+81 (0)3 6427 5860

inquiry@housserrep-tokyo.com

Transaction Type : Intermediate

Agent Fee : 1 month + tax

Website : www.housserrep-tokyo.com

