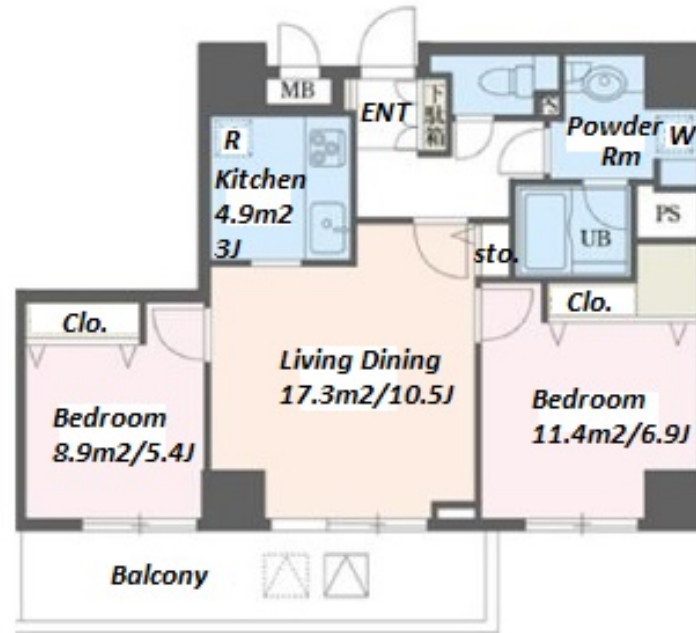


Property Name	DUE YOKOHAMA EKIMAE	Unit No.	TYPE	Access	Kanagawa Station on Keikyu Line (3 min) Yokohama Station on JR Keihin Tohoku Line (5 min)
		1301	Apt.		
Address	8-1, Kinkocho, Kanagawa-Ku, Yokohama-Shi, Kanagawa				



Lease Conditions	
LAYOUT	2 BR
SIZE	61.63 m²/663.37 ft²
RENT	JPY 251,000 / month
Management Fee	JPY 10,000/month
Deposit	2 months
Key Money	1 month
Lease Term	Standard lease for 24 months
Available	End, Jul, 2024
Renewal Fee	1 month
Agent Fee	1 month + tax
Other Info	Key Replacement Fee : JPY 15,000 Tax not included / Guarantor Company : TBC / Auto lock / Air-Con / Separated Toilet / Balcony / Internet Included / Penalty Fee for Early Cancellation / CS/CATV / Flooring

Building Information	
Completion	Mar, 2003
Earthquake Resistance	New
Structure	RC, 21 floors above and 1 basement floors
Car Parking	JPY 30,000 + tax / month
Bicycle Parking	(Included)
Music Instrument	-
Pet	N/A
Facilities	Motorcycle Parking (TBC) / Trunk Room (TBC) / Near Large Parks / Janitor / Delivery box / Elevator / Close to Station / 24h Garbage Drop-off / High-rise

Remarks
Renters Insurance : Required

\*The actual Layout & Size may differ slightly from this floor plans & pictures.



HOUSEREP TOKYO INC.

ハウズレップトーキョー株式会社

#301, 1-4-15, Hiroo, Shibuya-ku, Tokyo 150-0012, Japan

+81 (0)3 6427 5860

inquiry@housserrep-tokyo.com

Transaction Type : Intermediate

Agent Fee : 1 month + tax

Website : www.housserrep-tokyo.com

