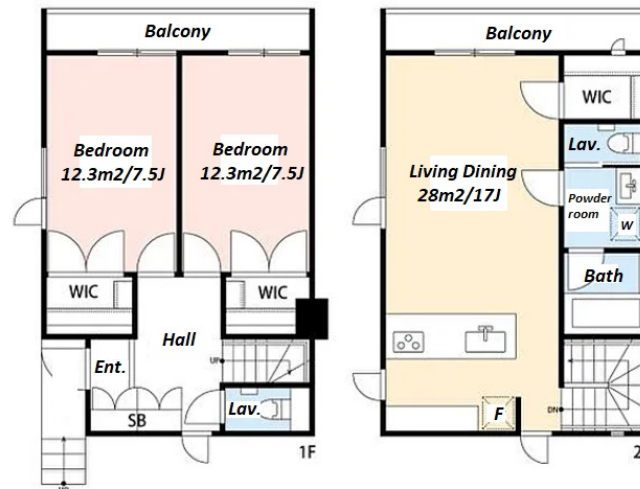
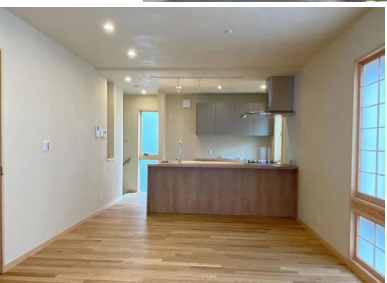


Property Name	TRINE HATSUDAI	Unit No.	TYPE	Access	Hatsudai Station on Keio Line (6 min)
		B	Apt.		
Address	1-11-12, Hommachi, Shibuya-Ku, Tokyo				

Newly-built low-rise apartment in Hatsudai



Lease Conditions			
LAYOUT	2 BR		
SIZE	82.26 m²/885.43 ft²		
RENT	JPY 460,000 / month		
Management Fee	-		
Deposit	2 months	Key Money	1 month
Lease Term	Fixed term lease for 36 months		
Available	Early, Jun, 2024		
Renewal Fee	-		
Agent Fee	1 month + tax		
Other Info	Air-Con / Separated Toilet / Balcony / Musical Instrument Negotiable / Floor Heating / Dishwasher / Bathroom dryer / WIC / 2 Toilets		

Building Information			
Completion	May, 2024	Earthquake Resistance	New
Structure	Wooden, 3 floors above and 1 basement floors		
Car Parking	(Included)		
Bicycle Parking	-		
Music Instrument	Negotiable	Pet	N/A
Facilities	Low-rise / Newly-built (~1 y/o)		

Remarks
Renters Insurance : Required

*The actual Layout & Size may differ slightly from this floor plans & pictures.



HOUSE REP TOKYO INC.

ハウズレップトーキョー株式会社

#301, 1-4-15, Hiroo, Shibuya-ku, Tokyo 150-0012, Japan

+81 (0)3 6427 5860

inquiry@housserep-tokyo.com

Transaction Type : Intermediate

Agent Fee : 1 month + tax

Website : www.housserep-tokyo.com

