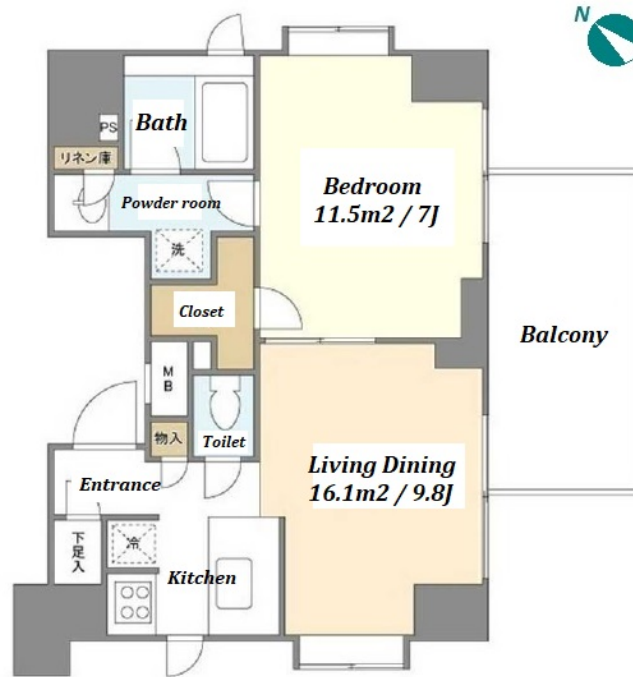


Property Name	LIBARE TSUKISHIMA	Unit No.	TYPE	Access	Tsukishima Station on Yurakucho Line (1 min) Tsukishima Station on Oedo Line (1 min)
		1005	Apt.		
Address	2-14-11, Tsukishima, Chuo-Ku, Tokyo				



Lease Conditions

LAYOUT	1 BR	
SIZE	39.84 m ² /428.83 ft ²	
RENT	JPY 208,000 / month	
Management Fee	JPY8,000/month	
Deposit	1 month	Key Money 1 month
Lease Term	Standard lease for 24 months	
Available	End, May, 2024	
Renewal Fee	1 month	
Agent Fee	1 month + tax	
Other Info	Key Replacement Fee : JPY30,000 Tax not included / Auto lock / Air-Con / Separated Toilet / Balcony / Internet Included / Flooring / Bathroom dryer / Corner Unit	

Building Information

Completion	Feb, 2007	Earthquake Resistance	New
Structure	RC, 13 floors above		
Car Parking	-		
Bicycle Parking	(Included)		
Music Instrument	-	Pet	-
Facilities	Within 20 min to Roppongi by train / Within 20 min to Tokyo station by car / Elevator / Close to Station		

Remarks

Remarks	Renters Insurance : Required
---------	------------------------------

*The actual Layout & Size may differ slightly from this floor plans & pictures.



HOUSEREP TOKYO INC.

ハウスレップトーキョー株式会社

#301, 1-4-15, Hiroo, Shibuya-ku, Tokyo 150-0012, Japan

+81 (0)3 6427 5860

inquiry@housserrep-tokyo.com

Transaction Type : Intermediate

Agent Fee : 1 month + tax

Website : www.housserrep-tokyo.com

