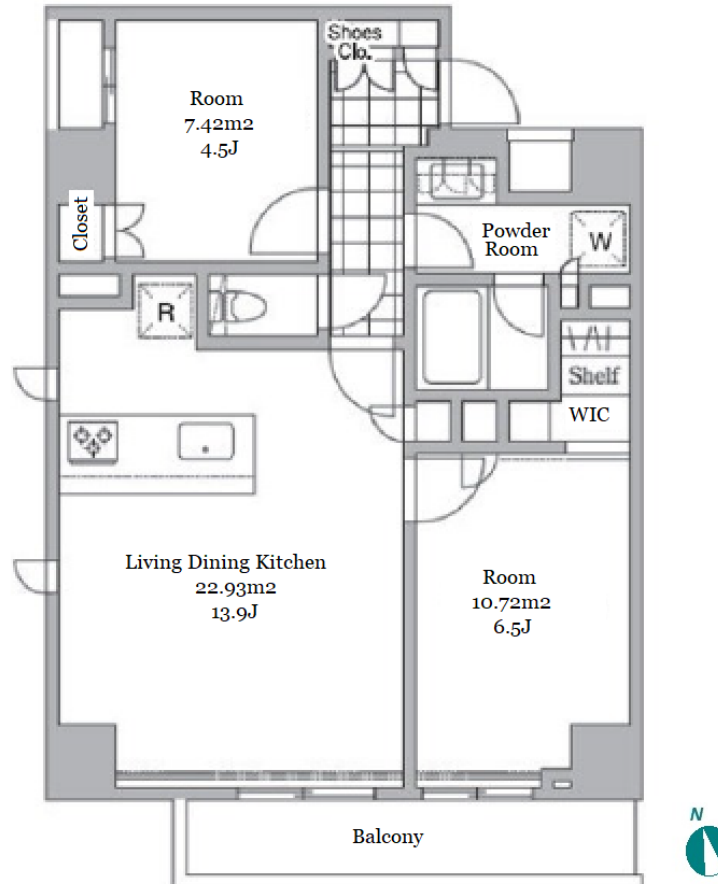
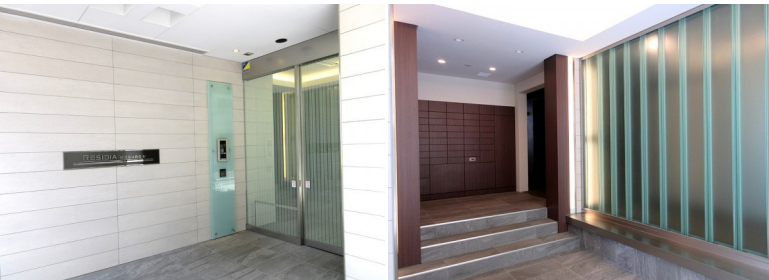


Property Name	RESIDIA MEGURO IV	Unit No.	TYPE	Access	Meguro Station on JR Yamanote Line (10 min) Meguro Station on Namboku Line (10 min)
		503	Apt.		
Address	2-10-18, Meguro, Meguro-Ku, Tokyo				

Stylish Apt. in Meguro near "Meguro River"



*The actual Layout & Size may differ slightly from this floor plans & pictures.

Lease Conditions	
LAYOUT	2 BR
SIZE	55.76 m ² /600.19 ft ²
RENT	JPY 265,000 / month
Management Fee	JPY15,000/month
Deposit	2 months
Key Money	1 month
Lease Term	Standard lease for 24 months
Available	Now
Renewal Fee	1 month
Agent Fee	1 month + tax
Other Info	Key Replacement Fee : JPY30,000 Tax not included / Guarantor Company : TBC / Auto lock / Air-Con / Separated Toilet / Balcony / Penalty Fee for Early Cancellation / Flooring / Bathroom dryer / WIC

Building Information	
Completion	Feb, 2016
Earthquake Resistance	New
Structure	RC, 10 floors above
Car Parking	JPY36,000 + tax / month
Bicycle Parking	TBC
Music Instrument	-
Pet	N/A
Facilities	Motorcycle Parking (TBC) / Within 20 min to Roppongi by train / Near Large Parks

Remarks
Tenant support fee: JPY.10,000+tax/2years / Parking : 1 month for deposit



HOUSEREP TOKYO INC.

ハウスレップトーキョー株式会社

#301, 1-4-15, Hiroo, Shibuya-ku, Tokyo 150-0012, Japan

+81 (0)3 6427 5860 inquiry@housserep-tokyo.com

Transaction Type : Intermediate

Agent Fee : 1 month + tax

Website : www.housserep-tokyo.com

