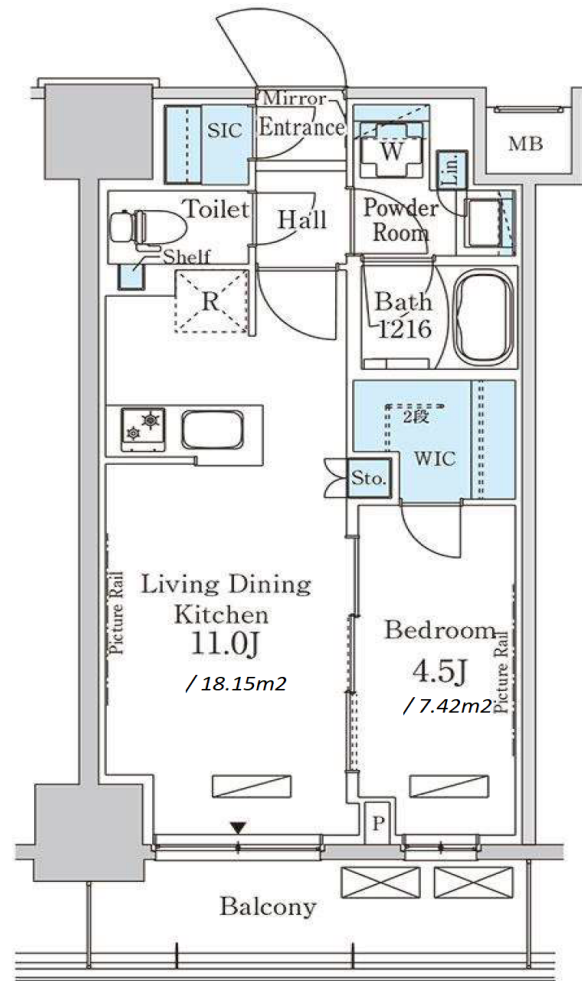


| | | | | | |
|---------------|----------------------------------|----------|------|--------|--|
| Property Name | PARK AXIS KINSHIKOEN | Unit No. | TYPE | Access | Kinshichou Station on Hanzomon Line (5 min) Kinshichou Station on JR Chuo-Sobu Line (6 min) |
| | | 1203 | Apt. | | |
| Address | 4-10-4, Kinshi, Sumida-Ku, Tokyo | | | | |



*The actual Layout & Size may differ slightly from this floor plans & pictures.

| Lease Conditions | |
|------------------|--|
| LAYOUT | 1 BR |
| SIZE | 39.1 m ² /420.86 ft ² |
| RENT | JPY 196,000 / month |
| Management Fee | JPY18,000/month |
| Deposit | 2 months |
| Key Money | 1 month |
| Lease Term | Standard lease for 24 months |
| Available | End, Jul, 2024 |
| Renewal Fee | 1 month |
| Agent Fee | 1 month + tax |
| Other Info | Key Replacement Fee : JPY15,000 Tax not included / Guarantor Company : TBC / Auto lock / Air-Con / Separated Toilet / Balcony / Internet Included / Penalty Fee for Early Cancellation / Musical Instrument Negotiable / CS/CATV / Flooring / Bathroom dryer / WIC |

| Building Information | | | |
|----------------------|---|-----------------------|---------|
| Completion | Apr, 2023 | Earthquake Resistance | New |
| Structure | RC, 14 floors above | | |
| Car Parking | JPY30,000 + tax / month | | |
| Bicycle Parking | for 1 space JPY300 + tax / month | | |
| Music Instrument | Negotiable | Pet | Allowed |
| Facilities | Delivery box / Elevator / Close to Station / Newly-built (~7 y/o) | | |



HOUSEREP TOKYO INC.

ハウスレップトーキョー株式会社

#301, 1-4-15, Hiroo, Shibuya-ku, Tokyo 150-0012, Japan

+81 (0)3 6427 5860

inquiry@housserrep-tokyo.com

Transaction Type : Intermediate

Agent Fee : 1 month + tax

Website : www.housserrep-tokyo.com



| Remarks |
|--|
| Renters Insurance : Required / Bicycle parking : registration fee : JPY1,000+tax / Pet:additional deposit (1 month) / Pet : a small dog or a cat |