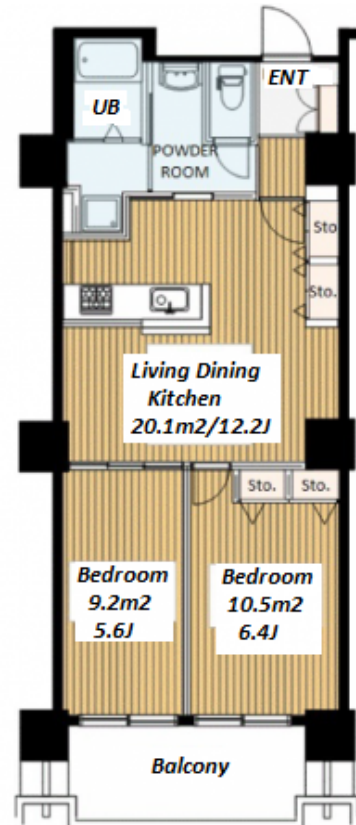


Property Name	ROPPONGI VIEW TOWER	Unit No.	TYPE	Access	Ropponngicchoume Station on Namboku Line (3 min) Kamiyachou Station on Hibiya Line (5 min)
		1804	Apt.		
Address	1-9-35, Roppongi, Minato-Ku, Tokyo				

High-rise Apartment in Roppongi, near Azabu / Akasaka



Lease Conditions	
LAYOUT	2 BR
SIZE	57.98 m ² /624.09 ft ²
RENT	JPY 349,000 / month
Management Fee	-
Deposit	2 months
Key Money	-
Lease Term	Fixed term lease for 36 months
Available	Now
Renewal Fee	-
Agent Fee	1 month + tax
Other Info	Depreciation : 1 month / Guarantor Company : TBC / No Key Money / Free rent / Auto lock / Air-Con / Separated Toilet / Balcony / Internet (Extra Charge) / Penalty Fee for Early Cancellation / Nice Views / Flooring / Bathroom dryer

Building Information	
Completion	Oct, 1993
Earthquake Resistance	New
Structure	RC, 20 floors above
Car Parking	TBC
Bicycle Parking	TBC
Music Instrument	-
Pet	-
Facilities	Motorcycle Parking (TBC) / Trunk Room (TBC) / Within 20 min to Roppongi by train / Near Large Parks / Janitor / Delivery box / Elevator / Close to Station / High-rise

Remarks
Renters Insurance : Required

*The actual Layout & Size may differ slightly from this floor plans & pictures.



HOUSEREP TOKYO INC.

ハウスレップトーキョー株式会社

#301, 1-4-15, Hiroo, Shibuya-ku, Tokyo 150-0012, Japan

+81 (0)3 6427 5860

inquiry@housserep-tokyo.com

Transaction Type : Intermediate

Agent Fee : 1 month + tax

Website : www.housserep-tokyo.com

