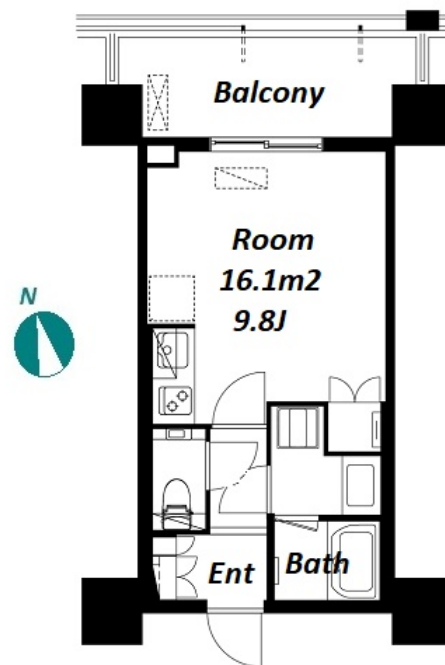
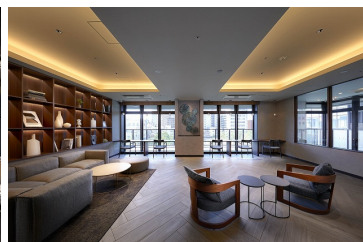
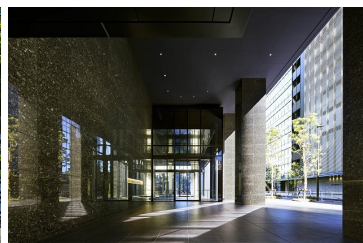
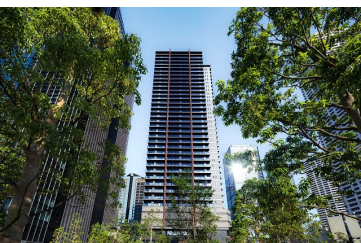


Sales Price	65,400,000 JPY	Access	Nishishinnjuku Station on Tochoumae Station on	Marunouchi Line 7 min. walk	Oedo Line 8 min. walk
Tax	Included				

Property Name	CITY TOWER SHINJUKU
Address	10F, 5-2-1, Nishishinjuku, Shinjuku-Ku, Tokyo

Luxury Tower Condo Completed in 2023



*The actual Layout & Size may differ slightly from this floor plans & pictures.

Unit/Property Information			
LAYOUT	Studio	Management Fee	JPY13,615/month
Unit Floor	10F	Repair Fund	JPY3,620/month
Floor Size(sqm)	27.12 m ²	Other Fee	-
Floor Size(sqft)	291.91 ft ²	Total Monthly Fee	JPY17,235/month
Balcony	8.65 m ²	Current Status	Rented
Facing	Northeast	Hand Over	Negotiable
Unit Facilities	Pet : No, Auto lock, Separated Toilet, Balcony, Bathroom dryer		

Building Information			
Structure	RC 35 floors above and 2 basement floors		
Total Units	428	Completion	Feb, 2023
Car Parking	(Not Included)	Pet	-
Developer Name	-		
Management company&Type	Sumitomo Fudosan Tatemono Service Co., Ltd. Fully Outsourced / Permanent		
Common Facility	Motorcycle Parking (extra charge), Trunk Room (extra charge), Gym (extra charge), Within 20 min to Tokyo station by car, Delivery box,		

Remarks

<Unit/Property Information>

<Building Information>[Common Facilities] Elevator, New Earthquake Resistance Standard, Fitness, Gym, High-rise, Newly-built (~7 y/o), Newly-built (~1 y/o)

<Land Information>

Land Information			
Lot Area	-	Land lease term	-
Ownership Type	Ownership	Land lease fee	-
Co-owner's Share	-	Land Category	-
City Planning area	-		
Use Zoning	-		
Current Status	-	Bldg. to Land %	-
Hand Over	-	Floor to Land %	-
Private Road	-	Set Back	-
Other Conditions	-		



HOUSEREP TOKYO INC.

ハウズレップトーキョー株式会社

#301, 1-4-15, Hiroo, Shibuya-ku, Tokyo 150-0012, Japan

+81 (0)3 6427 5860

inquiry@housserep-tokyo.com

Transaction Type : Intermediate

Agent Fee : (3%+60,000JPY) + tax

Website : www.housserep-tokyo.com

