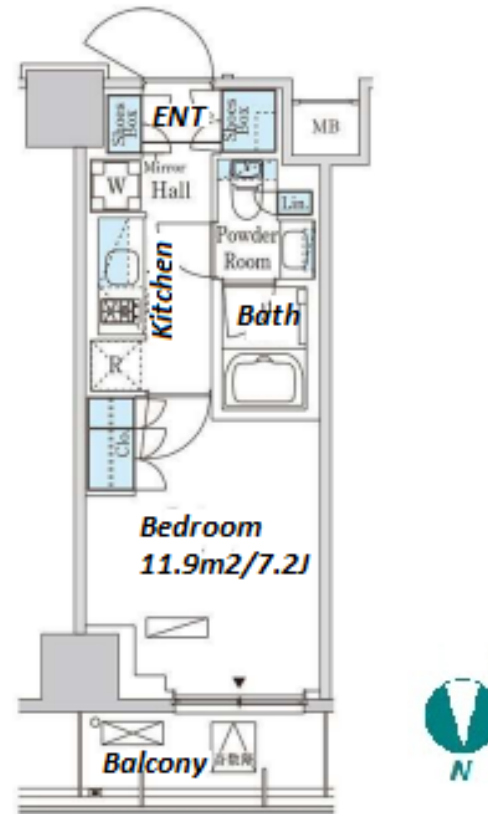
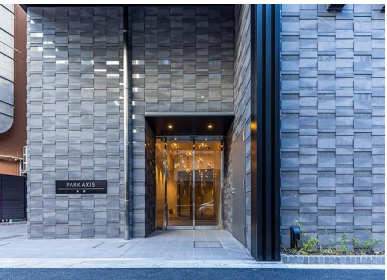


Property Name	PARK AXIS IKEBUKURO	Unit No.	TYPE	Access	Ikebukuro Station on JR Yamanote Line (5 min)
		1704	Apt.		
Address	3-22-9, Nishiikebukuro, Toshima-Ku, Tokyo				

Modern High-rise Apt. in Ikebukuro



Lease Conditions	
LAYOUT	Studio
SIZE	25.42 m²/273.61 ft²
RENT	JPY 148,000 / month
Management Fee	JPY 10,000/month
Deposit	2 months
Key Money	-
Lease Term	Standard lease for 24 months
Available	Now
Renewal Fee	1 month
Agent Fee	1 month + tax
Other Info	Key Replacement Fee : JPY 15,000 Tax not included / Guarantor Company : TBC / No Key Money / Auto lock / Air-Con / Separated Toilet / Balcony / Penalty Fee for Early Cancellation / Musical Instrument Negotiable / Flooring / Bathroom dryer

Building Information			
Completion	Dec, 2021	Earthquake Resistance	New
Structure	RC, 19 floors above		
Car Parking	for 1 space JPY 38,000 + tax / month		
Bicycle Parking	for 1 space (Included)		
Music Instrument	Negotiable	Pet	Allowed
Facilities	Motorcycle Parking (TBC) / Delivery box / Elevator / High-rise		

*The actual Layout & Size may differ slightly from this floor plans & pictures.



HOUSEREP TOKYO INC.

ハウスレップトーキョー株式会社

#301, 1-4-15, Hiroo, Shibuya-ku, Tokyo 150-0012, Japan

+81 (0)3 6427 5860

inquiry@housserrep-tokyo.com

Transaction Type : Intermediate

Agent Fee : 1 month + tax

Website : www.housserrep-tokyo.com



Remarks
Renters Insurance : Required / Bicycle parking : Registration fee: JPY 1,000+tax / Pet: additional deposit (1 month)