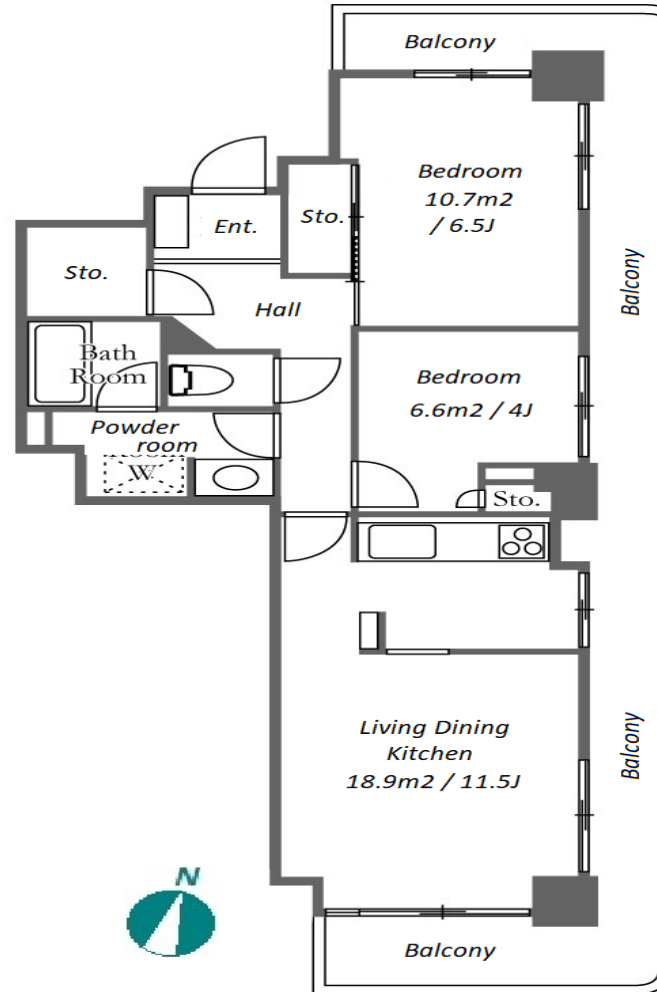


Property Name	RIVER CITY 21 EAST TOWERS 8	Unit No.	TYPE	Access	Tsukishima Station on Yurakucho Line (5 min) Hacchoubori Station on Hibiya Line (12 min)
		1601	Apt.		
Address	2-2-8, Tsukuda, Chuo-Ku, Tokyo				

## Renovated High Rise Apt. in Tsukuda, Tokyo Bay Area



\*The actual Layout & Size may differ slightly from this floor plans & pictures.

Lease Conditions	
LAYOUT	2 BR
SIZE	61.6 m <sup>2</sup> /663.05 ft <sup>2</sup>
RENT	JPY 236,000 / month
Management Fee	JPY10,000/month
Deposit	2 months
Key Money	-
Lease Term	Standard lease for 24 months
Available	Mid, May, 2024
Renewal Fee	1 month
Agent Fee	1 month + tax
Other Info	Key Replacement Fee : JPY15,000 Tax not included / Guarantor Company : TBC / No Key Money / Auto lock / Renovated / Air-Con / Separated Toilet / Balcony / Internet (Extra Charge) / Penalty Fee for Early Cancellation / Flooring / Bathroom dryer / 2 Car Parks / Corner Unit

Building Information			
Completion	Apr, 1989	Earthquake Resistance	New
Structure	SRC, 19 floors above and 1 basement floors		
Car Parking	JPY30,000 + tax / month		
Bicycle Parking	N/A		
Music Instrument	-	Pet	N/A
Facilities	Trunk Room (( Included )) / Near Large Parks / Janitor / Delivery box / Elevator / Security / Close to Station / High-rise		

Remarks
Parking : 3 months deposit / Renovated in June 2017.



HOUSEREP TOKYO INC.

ハウスレップトーキョー株式会社

#301, 1-4-15, Hiroo, Shibuya-ku, Tokyo 150-0012, Japan

+81 (0)3 6427 5860

inquiry@housserep-tokyo.com

Transaction Type : Intermediate

Agent Fee : 1 month + tax

Website : www.housserep-tokyo.com

