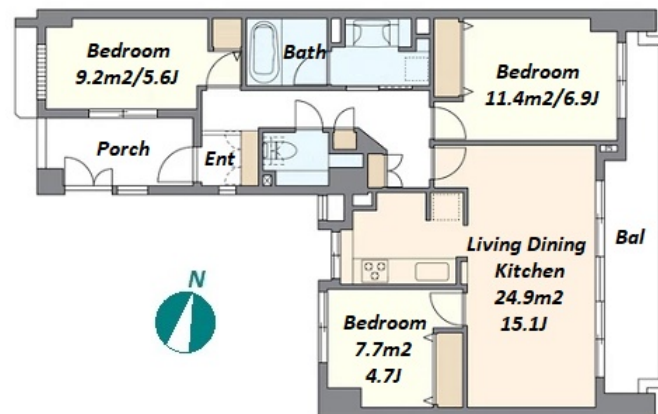


| | | | | |
|--------------------|----------------|---------------|---|---|
| Sales Price | 99,900,000 JPY | Access | Toritsudaigaku Station on Gakugeidaigaku Station on | Toyoko Line 11 min. walk Toyoko Line 13 min. walk |
| Tax | Included | | | |

| | |
|----------------------|---------------------|
| Property Name | DIANA COURT HIMONYA |
|----------------------|---------------------|

Low-rise Apartment in Upmarket Area "Himonya", Close to Shoppnig Mall



*The actual Layout & Size may differ slightly from this floor plans & pictures.

| | |
|----------------|--|
| Address | 1F, 4-12-10, Himonya, Meguro-Ku, Tokyo |
|----------------|--|

| Unit/Property Information | | | |
|---------------------------|--|--------------------------|-----------------|
| LAYOUT | 3 BR | Management Fee | JPY15,200/month |
| Unit Floor | 1F | Repair Fund | JPY20,530/month |
| Floor Size(sqm) | 75.67 m ² | Other Fee | - |
| Floor Size(sqft) | 814.5 ft ² | Total Monthly Fee | JPY35,730/month |
| Balcony | 11.65 m ² | Current Status | Vacant |
| Facing | Northeast | Hand Over | Negotiable |
| Unit Facilities | Pet friendly, Auto lock, Renovated, Separated Toilet, Balcony, Nice Views, CS/CATV, Flooring, Dishwasher, Bathroom dryer | | |

| Building Information | | | |
|------------------------------------|---|-------------------|------------|
| Structure | RC 3 floors above | | |
| Total Units | 27 | Completion | Mar, 2001 |
| Car Parking | (Not Included) | Pet | Negotiable |
| Developer Name | - | | |
| Management company&Type | Morimoto Quality Fully Outsourced / Day Shift | | |
| Common Facility | Janitor, Delivery box, Elevator, Security, New Earthquake Resistance Standard, Low-rise | | |

| Remarks |
|---|
| <Unit/Property Information> <Building Information> <Land Information> |

| Land Information | | | |
|---------------------------|-------------------------|------------------------|-------------|
| Lot Area | - | Land lease term | - |
| Ownership Type | Ownership | Land lease fee | - |
| Co-owner's Share | - | Land Category | Residential |
| City Planning area | Urban Planning District | | |
| Use Zoning | - | | |
| Current Status | - | Bldg. to Land % | - |
| Hand Over | - | Floor to Land % | - |
| Private Road | - | Set Back | - |
| Other Conditions | | | |

| | | | |
|---|--|---|---|
|  | HOUSEREP TOKYO INC. ハウスレップトーキョー株式会社 | Transaction Type : Intermediate Agent Fee : (3%+60,000JPY) + tax |  |
| | #301, 1-4-15, Hiroo, Shibuya-ku, Tokyo 150-0012, Japan +81 (0)3 6427 5860 inquiry@housserep-tokyo.com | Website : www.housserep-tokyo.com | |