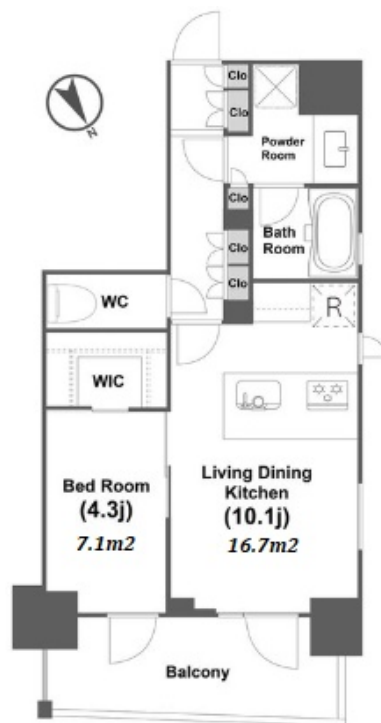
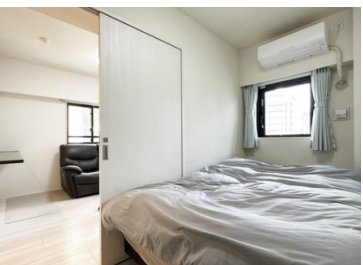


| | | | | |
|-------------|----------------|--------|-------------------------|--------------------------------|
| Sales Price | 61,800,000 JPY | Access | Akebonobashi Station on | Toei Shinjuku Line 3 min. walk |
| Tax | None | | Yotsuya Station on | Marunouchi Line 11 min. walk |

| | |
|---------------|-----------------------------------|
| Property Name | OPEN RESIDENCIA YOTSUYA-SAKAMACHI |
|---------------|-----------------------------------|

Newly Apartment in Yotsuya



*The actual Layout & Size may differ slightly from this floor plans & pictures.

| | |
|---------|--|
| Address | 10F, 12-16, Yotsuyasakamachi, Shinjuku-Ku, Tokyo |
|---------|--|

Unit/Property Information

| | | | |
|------------------|--|-------------------|-----------------|
| LAYOUT | 1 BR | Management Fee | JPY14,430/month |
| Unit Floor | 10F | Repair Fund | JPY3,710/month |
| Floor Size(sqm) | 41.21 m ² | Other Fee | JPY2,190/month |
| Floor Size(sqft) | 443.58 ft ² | Total Monthly Fee | JPY20,330/month |
| Balcony | 7.74 m ² | Current Status | Occupied |
| Facing | Northeast | Hand Over | Negotiable |
| Unit Facilities | Pet friendly, Auto lock, Separated Toilet, Balcony, Floor Heating, Dishwasher, Bathroom dryer, Corner Unit | | |

Building Information

| | | | |
|-------------------------|--|------------|------------|
| Structure | RC 13 floors above | | |
| Total Units | 23 | Completion | Jul, 2020 |
| Car Parking | - | Pet | Negotiable |
| Developer Name | Open House | | |
| Management company&Type | Nihon Housing Fully Outsourced / Day Shift | | |
| Common Facility | Delivery box, Elevator, New Earthquake Resistance Standard, Close to Station, Newly-built (~7 y/o) | | |

Remarks

<Unit/Property Information>
<Building Information>
<Land Information>

Land Information

| | | | |
|--------------------|-----------------------|-----------------|-------------|
| Lot Area | 200.47 m ² | Land lease term | - |
| Ownership Type | Ownership | Land lease fee | - |
| Co-owner's Share | - | Land Category | Residential |
| City Planning area | - | | |
| Use Zoning | - | | |
| Current Status | - | Bldg. to Land % | - |
| Hand Over | - | Floor to Land % | - |
| Private Road | - | Set Back | - |
| Other Conditions | | | |



HOUSEREP TOKYO INC.

ハウスレップトーキョー株式会社

#301, 1-4-15, Hiroo, Shibuya-ku, Tokyo 150-0012, Japan

+81 (0)3 6427 5860

inquiry@housserep-tokyo.com

Transaction Type : Intermediate

Agent Fee : (3%+60,000JPY) + tax

Website : www.housserep-tokyo.com

