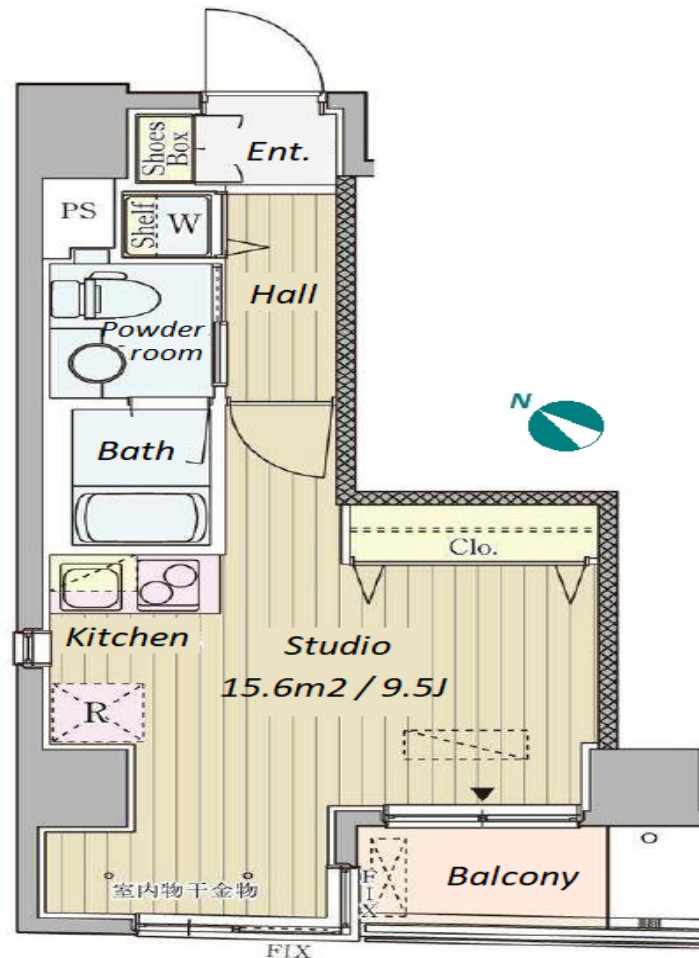
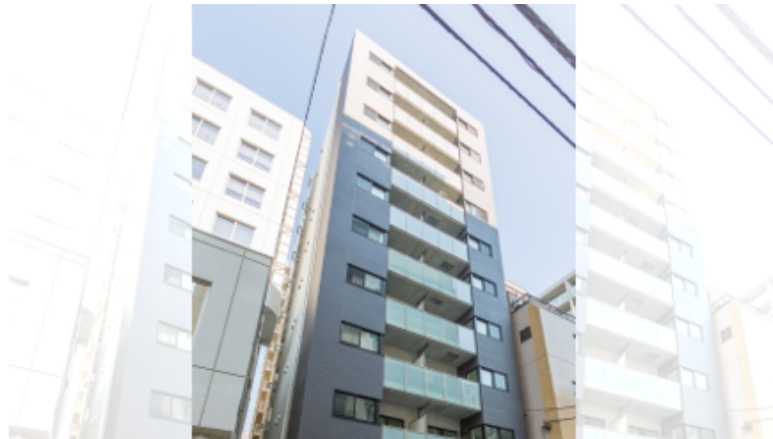


Property Name	CORTILE NIHONBASHI NINGYOCHO	Unit No.	TYPE	Access	Ninngyouchou Station on Hibiya Line (2 min) Kodenmachou Station on Hibiya Line (8 min)
		202	Apt.		
Address	1-8-2, Nihombashihoridomecho, Chuo-Ku, Tokyo				

Stylish Apt. in Ninghocho, good access to 3 stn. 3lines



*The actual Layout & Size may differ slightly from this floor plans & pictures.

Lease Conditions		
LAYOUT	Studio	
SIZE	25.89 m ² /278.67 ft ²	
RENT	JPY 119,000 / month	
Management Fee	JPY10,000/month	
Deposit	2 months	Key Money 1 month
Lease Term	Standard lease for 24 months	
Available	End, Jun, 2024	
Renewal Fee	1 month	
Agent Fee	1 month + tax	
Other Info	Key Replacement Fee : JPY20,000 Tax not included / Guarantor Company : TBC / Auto lock / Air-Con / Separated Toilet / Balcony / Internet Included / Internet (Extra Charge) / Penalty Fee for Early Cancellation / Flooring / IH Stoves / Bathroom dryer	

Building Information			
Completion	Mar, 2018	Earthquake Resistance	New
Structure	RC, 10 floors above		
Car Parking	N/A		
Bicycle Parking	for 1 space (Included)		
Music Instrument	-	Pet	N/A
Facilities	Within 20 min to Tokyo station by car / Near Large Parks / Janitor / Delivery box		



HOUSEREP TOKYO INC.

ハウスレップトーキョー株式会社

#301, 1-4-15, Hiroo, Shibuya-ku, Tokyo 150-0012, Japan

+81 (0)3 6427 5860

inquiry@housserep-tokyo.com

Transaction Type : Intermediate

Agent Fee : 1 month + tax

Website : www.housserep-tokyo.com



Remarks
Renters Insurance : Required