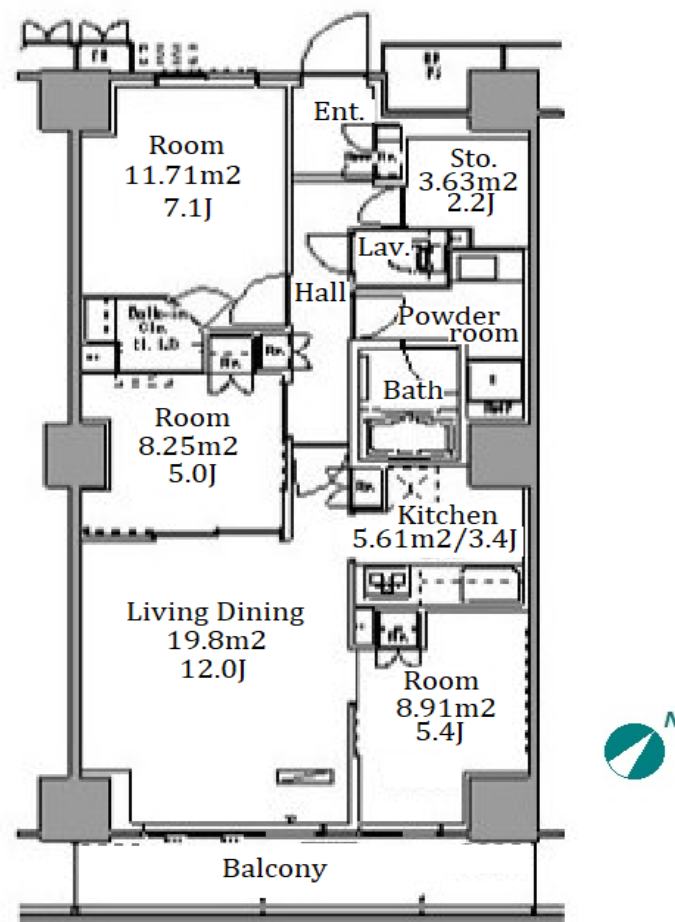
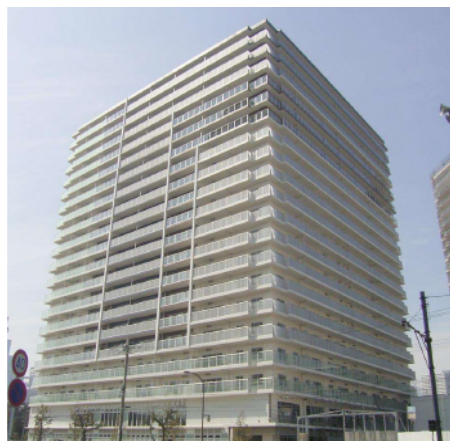


Property Name	PARK AXIS TOYOSU	Unit No.	TYPE	Access	Toyosu Station on Yurakucho Line (8 min) Tsukishima Station on Yurakucho Line (14 min)
		1009	Apt.		
Address	1-2-39, Toyosu, Koto-Ku, Tokyo				

## Mid-rise Apt. in Toyosu, Tokyo Bay area



\*The actual Layout & Size may differ slightly from this floor plans & pictures.

Lease Conditions			
LAYOUT	3 BR		
SIZE	78.45 m²/844.42 ft²		
RENT	JPY 308,000 / month		
Management Fee	JPY12,000/month		
Deposit	2 months	Key Money	-
Lease Term	Standard lease for 24 months		
Available	Mid, Jun, 2024		
Renewal Fee	1 month		
Agent Fee	1 month + tax		
Other Info	Key Replacement Fee : JPY15,000 Tax not included / Guarantor Company : TBC / No Key Money / Auto lock / Air-Con / Separated Toilet / Balcony / Penalty Fee for Early Cancellation / Musical Instrument Negotiable / Bathroom dryer / WIC		
Building Information			
Completion	Mar, 2008	Earthquake Resistance	New
Structure	RC, 20 story		
Car Parking	extra charge		
Bicycle Parking	JPY200 ~ 300 + tax / month		
Music Instrument	Negotiable	Pet	Allowed
Facilities	Motorcycle Parking (extra charge) / Trunk Room (extra charge) / Gym (( Included )) / Concierge / Delivery box / Elevator		



**HOUSE REP TOKYO INC.**

ハウスレップトーキョー株式会社

#301, 1-4-15, Hiroo, Shibuya-ku, Tokyo 150-0012, Japan

+81 (0)3 6427 5860

inquiry@housserep-tokyo.com

Transaction Type : Intermediate

Agent Fee : 1 month + tax

Website : www.housserep-tokyo.com



Remarks
Renters Insurance : Required / Pet:additional deposit ( 1 month )