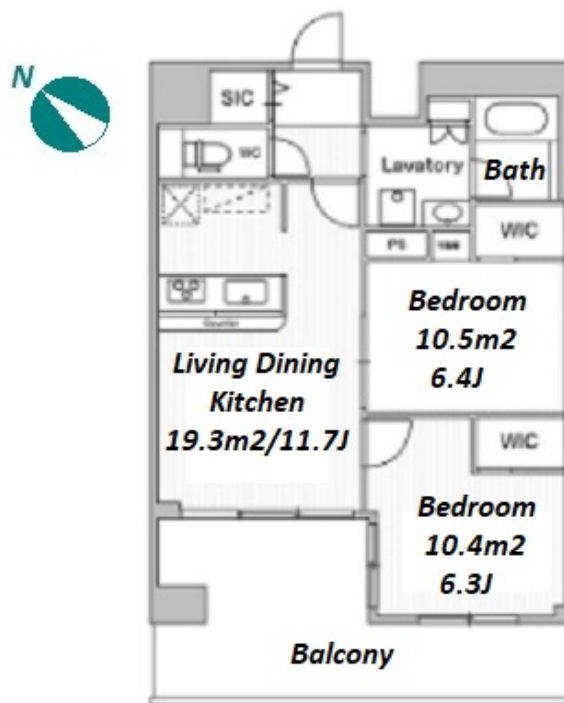


Property Name	COMFORIA LIV SUGAMO	Unit No.	TYPE	Access	Sugamo Station on Mita Line (3 min) Sugamo Station on JR Yamanote Line (4 min)
		1003	Apt.		
Address	1-29-2, Sugamo, Toshima-Ku, Tokyo				

Stylish Apt. near "Sugamo" stn. with sound-proof window glass



Lease Conditions			
LAYOUT	2 BR		
SIZE	57.47 m²/618.6 ft²		
RENT	JPY 285,000 / month		
Management Fee	JPY15,000/month		
Deposit	2 months	Key Money	-
Lease Term	Standard lease for 24 months		
Available	Now		
Renewal Fee	1 month		
Agent Fee	1 month + tax		
Other Info	No Key Money / Auto lock / Separated Toilet / Internet Included / Flooring / Dishwasher / Bathroom dryer / WIC		

Building Information			
Completion	Oct, 2023	Earthquake Resistance	New
Structure	RC, 10 story		
Car Parking	N/A		
Bicycle Parking	JPY300 + tax / month		
Music Instrument	-	Pet	-
Facilities	Janitor / Delivery box / Elevator / Security / Close to Station / 24h Garbage Drop-off / Newly-built (~1 y/o)		

Remarks
Renters Insurance : Required

*The actual Layout & Size may differ slightly from this floor plans & pictures.



HOUSEREP TOKYO INC.

ハウスレップトーキョー株式会社

#301, 1-4-15, Hiroo, Shibuya-ku, Tokyo 150-0012, Japan

+81 (0)3 6427 5860

inquiry@housserep-tokyo.com

Transaction Type : Intermediate

Agent Fee : 1 month + tax

Website : www.housserep-tokyo.com

