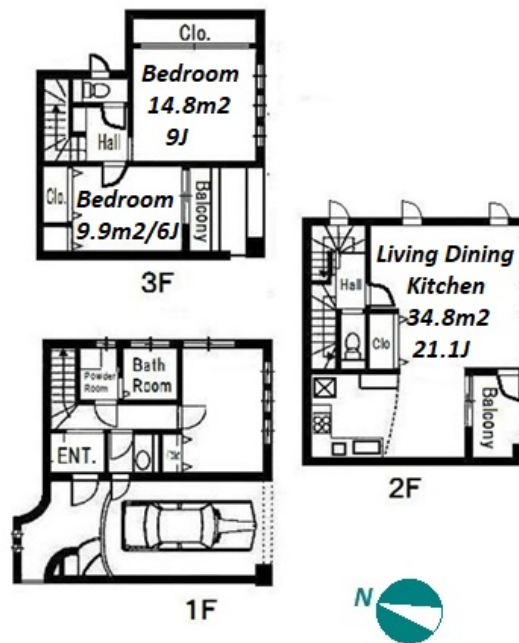


Property Name	COURT HOUSE NEO	Unit No.	TYPE	Access	Sakurashinnmachi Station on Denentoshi Line (14 min)
		G	Apt.		
Address	7-12-3, Fukasawa, Setagaya-Ku, Tokyo				

Compound residence in Fukasawa, near Komazawa Olympic Park



Lease Conditions			
LAYOUT	3 BR		
SIZE	111.82 m ² /1203.62 ft ²		
RENT	JPY 360,000 / month		
Management Fee	-		
Deposit	2 months	Key Money	1 month
Lease Term	Standard lease for 24 months		
Available	End, May, 2024		
Renewal Fee	1 month		
Agent Fee	1 month + tax		
Other Info	Air-Con / Separated Toilet / Balcony / Loft/Maisonnette / Flooring / Dishwasher / Bathroom dryer / Large Dog Friendly / 2 Toilets		

Building Information			
Completion	Oct, 2005	Earthquake Resistance	New
Structure	Wooden, 3 story		
Car Parking	for 1 space (Included)		
Bicycle Parking	N/A		
Music Instrument	-	Pet	
Facilities	Near Large Parks		

Remarks
Renters Insurance : Required / Pet:additional deposit (1 month) + depreciation fee (1 month)

*The actual Layout & Size may differ slightly from this floor plans & pictures.



HOUSEREP TOKYO INC.

ハウスレップトーキョー株式会社

#301, 1-4-15, Hiroo, Shibuya-ku, Tokyo 150-0012, Japan

+81 (0)3 6427 5860

inquiry@housserrep-tokyo.com

Transaction Type : Intermediate

Agent Fee : 1 month + tax

Website : www.housserrep-tokyo.com

