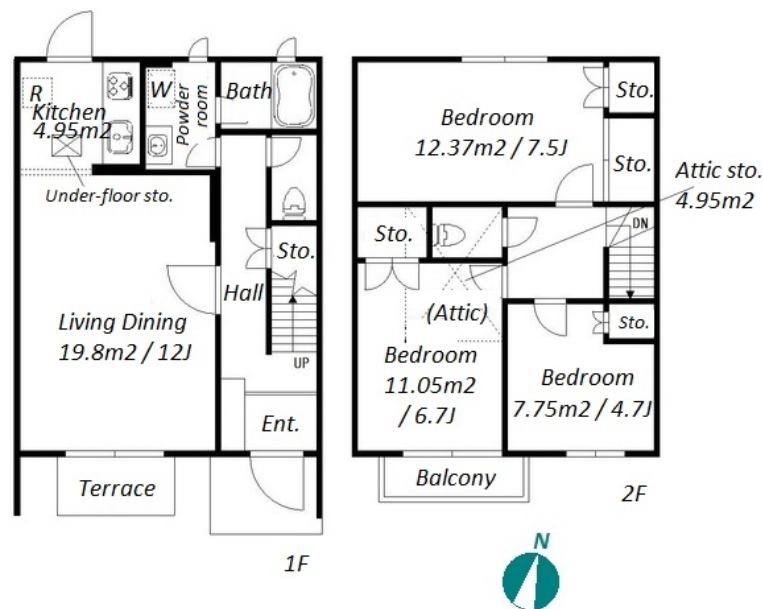


Property Name	MAISON DE FOREST	Unit No.	TYPE	Access	Toritsudaigaku Station on Toyoko Line (15 min) Jiyuugaoka Station on Toyoko Line (16 min)
		1	House		
Address	3-19-9, Yakumo, Meguro-Ku, Tokyo				

## Cozy Town House in Yakumo, Meguro near Komazawa Olympic Park



Lease Conditions			
LAYOUT	3 BR		
SIZE	84.46 m²/909.11 ft²		
RENT	JPY 260,000 / month		
Management Fee	-		
Deposit	1 month	Key Money	1 month
Lease Term	Standard lease for 24 months		
Available	Now		
Renewal Fee	1 month		
Agent Fee	1 month + tax		
Other Info	Key Replacement Fee : JPY25,000 Tax not included / Guarantor Company : TBC / Air-Con / Separated Toilet / Balcony / Musical Instrument Negotiable / Garden/Terrace / Flooring / 2 Toilets		

Building Information			
Completion	Mar, 1994	Earthquake Resistance	New
Structure	Wooden, 2 story		
Car Parking	for 1 space ( Included )		
Bicycle Parking	for 1 space ( Included )		
Music Instrument	Negotiable	Pet	N/A
Facilities	House / Near Large Parks		

Remarks
Renters Insurance : Required

\*The actual Layout & Size may differ slightly from this floor plans & pictures.



# HOUSEREP TOKYO INC.

ハウスレップトーキョー株式会社

#301, 1-4-15, Hiroo, Shibuya-ku, Tokyo 150-0012, Japan

+81 (0)3 6427 5860

inquiry@housserep-tokyo.com

Transaction Type : Intermediate

Agent Fee : 1 month + tax

Website : www.housserep-tokyo.com

