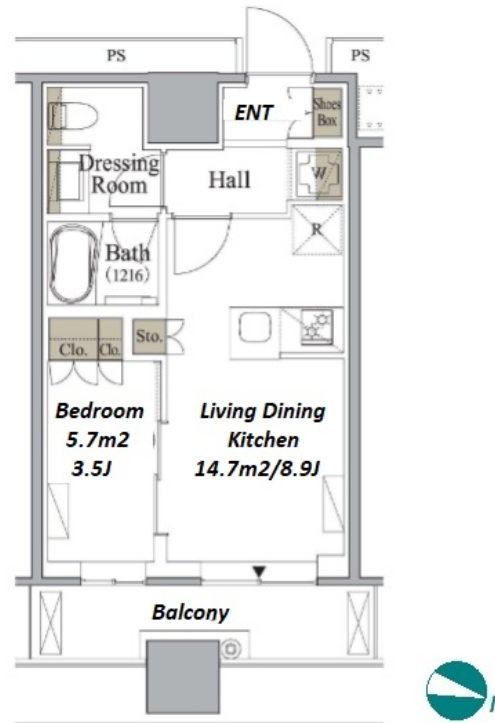


Property Name	MEGURO MARC RESIDENCE TOWER	Unit No.	TYPE	Access	Meguro Station on JR Yamanote Line (8 min) Meguro Station on Mita Line (8 min) Gotanda Station on JR Yamanote Line (9 min)
		308	Apt.		
Address	3-4-10, Nishigotanda, Shinagawa-Ku, Tokyo				

Modern Stylish Tower Residence in Meguro



Lease Conditions			
LAYOUT	1 BR		
SIZE	32.95 m ² /354.67 ft ²		
RENT	JPY 190,000 / month		
Management Fee	-		
Deposit	2 months	Key Money	1 month
Lease Term	Fixed term lease for 24 months		
Available	Early, Jun, 2024		
Renewal Fee	-		
Agent Fee	1 month + tax		
Other Info	Auto lock / Air-Con / Separated Toilet / Balcony / Internet Included / Penalty Fee for Early Cancellation / Flooring / Dishwasher / Bathroom dryer		

Building Information			
Completion	Oct, 2022	Earthquake Resistance	New
Structure	RC, 24 story		
Car Parking	JPY45,000 ~ 60,000 + tax / month		
Bicycle Parking	JPY300 ~ 3,000 + tax / month		
Music Instrument	-	Pet	
Facilities	Motorcycle Parking (JPY5,000 ~ 15,000 + tax / month) / Concierge / Elevator / 24h Garbage Drop-off / High-rise / Newly-built (~7 y/o)		

*The actual Layout & Size may differ slightly from this floor plans & pictures.



HOUSEREP TOKYO INC.

ハウズレップトーキョー株式会社

#301, 1-4-15, Hiroo, Shibuya-ku, Tokyo 150-0012, Japan

+81 (0)3 6427 5860

inquiry@houserep-tokyo.com

Transaction Type : Intermediate

Agent Fee : 1 month + tax

Website : www.houserep-tokyo.com



Remarks
Fixed term lease : Re-contract fee : 1 month / Renters Insurance : Required / Pet:additional deposit (1 month)