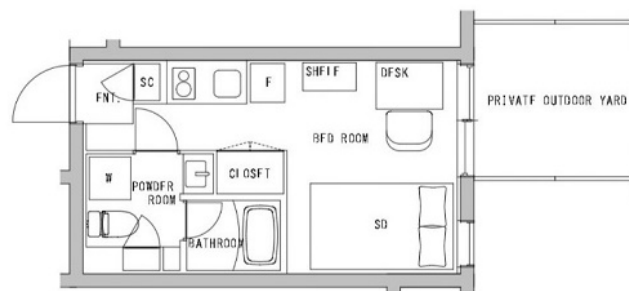


| | | | | | |
|---------------|--------------------------------------|----------|------|--------|---|
| Property Name | HMLET GAKUGEIDAIGAKU | Unit No. | TYPE | Access | Gakugeidaigaku Station on Toyoko Line (8 min) |
| Address | 6-14-13, Shimoma, Setagaya-Ku, Tokyo | 1Studio | Apt. | | |

Tranquil Living within Vibrant Tokyo



※ **Price for monthly rent may vary based on lease periods, seasons, floor levels, etc.**

*The actual Layout & Size may differ slightly from this floor plans & pictures.



HOUSEREP TOKYO INC.

ハウスレップトーキョー株式会社

#301, 1-4-15, Hiroo, Shibuya-ku, Tokyo 150-0012, Japan

+81 (0)3 6427 5860

inquiry@housserep-tokyo.com

Transaction Type : Intermediate

Agent Fee : 1 month + tax

Website : www.housserep-tokyo.com



| Lease Conditions | |
|------------------|---|
| LAYOUT | Studio |
| SIZE | 19.89 m ² /214.09 ft ² |
| RENT | JPY 223,000 / month |
| Management Fee | - |
| Deposit | - |
| Key Money | - |
| Lease Term | - |
| Available | Negotiable |
| Renewal Fee | - |
| Agent Fee | 1 month + tax |
| Other Info | No Key Money / Fridge / Air-Con / Balcony / Internet Included / Short-term Lease / Furnished / Washer / Dryer / Bathroom dryer / Semi-furnished (Home Appliances) |

| Building Information | | | |
|----------------------|-------------------------------------|-----------------------|-----|
| Completion | Oct, 2023 | Earthquake Resistance | New |
| Structure | RC | | |
| Car Parking | - | | |
| Bicycle Parking | - | | |
| Music Instrument | - | Pet | - |
| Facilities | Delivery box / Newly-built (~7 y/o) | | |

| Remarks |
|------------------------------|
| Renters Insurance : Required |