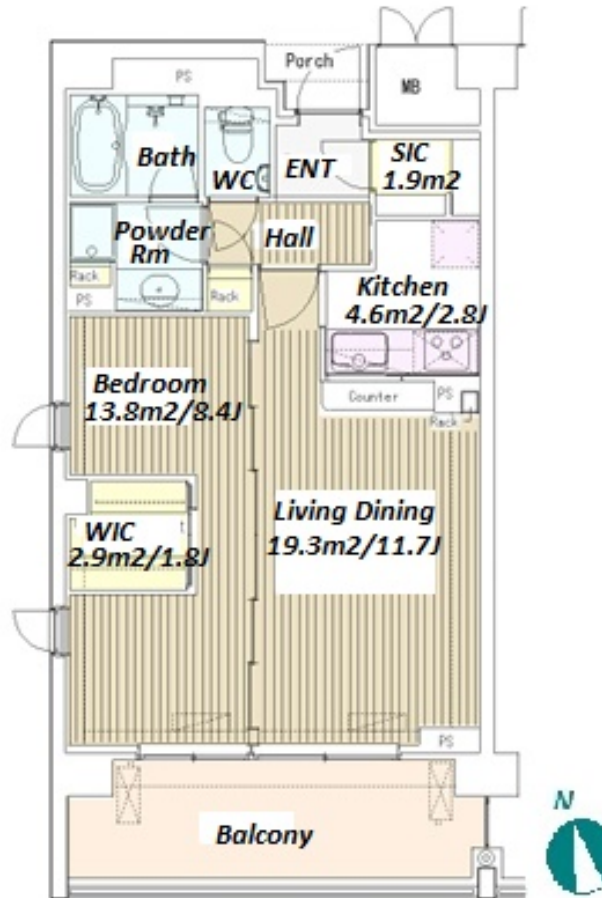


| | | | | | |
|---------------|----------------------------------|----------|------|--------|---|
| Property Name | MATURITY KOISHIKAWA | Unit No. | TYPE | Access | Myougadani Station on Marunouchi Line (10 min) Kourakuenn Station on Namboku Line (11 min) |
| | | 101 | Apt. | | |
| Address | 2-12-3, Kasuga, Bunkyo-Ku, Tokyo | | | | |



*The actual Layout & Size may differ slightly from this floor plans & pictures.

| Lease Conditions | | | |
|------------------|---|-----------|---------|
| LAYOUT | 1 BR | | |
| SIZE | 56.33 m²/606.33 ft² | | |
| RENT | JPY 216,000 / month | | |
| Management Fee | JPY10,000/month | | |
| Deposit | 2 months | Key Money | 1 month |
| Lease Term | Standard lease for 24 months | | |
| Available | Mid, Jun, 2024 | | |
| Renewal Fee | 1 month | | |
| Agent Fee | 1 month + tax | | |
| Other Info | Key Replacement Fee : JPY20,000 Tax not included / Auto lock / Air-Con / Separated Toilet / Balcony / Musical Instrument Negotiable / CS/CATV / Flooring / IH Stoves / Bathroom dryer / WIC | | |

| Building Information | | | |
|----------------------|---|-----------------------|---------|
| Completion | Mar, 2006 | Earthquake Resistance | New |
| Structure | RC, 5 story | | |
| Car Parking | JPY34,000 + tax / month | | |
| Bicycle Parking | for 1 space (Included) | | |
| Music Instrument | Negotiable | Pet | Allowed |
| Facilities | Motorcycle Parking (TBC) / Trunk Room ((Included)) / Concierge / Delivery box | | |

| Remarks |
|---|
| Renters Insurance : Required / Pet:additional deposit (1 month) / Pet : a small dog or up to two cats |



HOUSEREP TOKYO INC.

ハウスレップトーキョー株式会社

#301, 1-4-15, Hiroo, Shibuya-ku, Tokyo 150-0012, Japan

+81 (0)3 6427 5860 inquiry@housserep-tokyo.com

Transaction Type : Intermediate

Agent Fee : 1 month + tax

Website : www.housserep-tokyo.com

