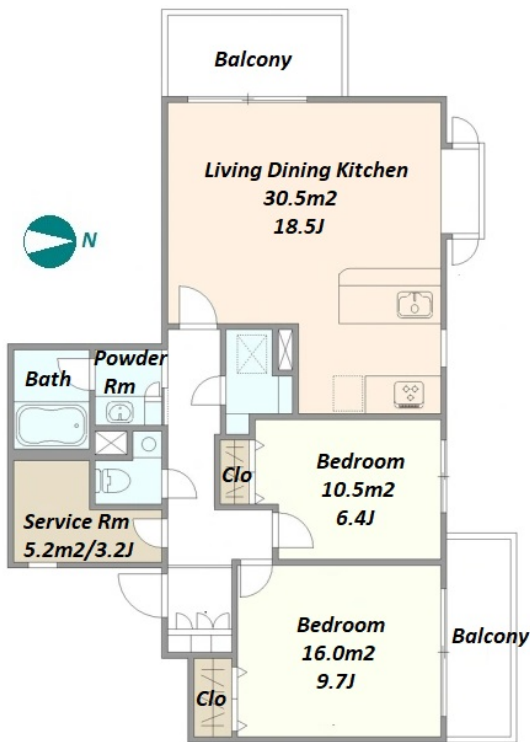


| | | | | |
|-------------|-----------------|--------|-----------------------|-------------------------------|
| Sales Price | 104,800,000 JPY | Access | Meguro Station on | JR Yamanote Line 12 min. walk |
| Tax | Included | | Nakameguro Station on | Toyoko Line 14 min. walk |

| | |
|---------------|----------------------|
| Property Name | MEGURO ROYAL HEIGHTS |
|---------------|----------------------|

Spacious Apartment at the Residential Neighborhoods of Meguro



*The actual Layout & Size may differ slightly from this floor plans & pictures.

| | |
|---------|--------------------------------------|
| Address | 2F, 3-4-16, Meguro, Meguro-Ku, Tokyo |
|---------|--------------------------------------|

| Unit/Property Information | | | |
|---------------------------|---|-------------------|-----------------|
| LAYOUT | 2 BR+S | Management Fee | JPY23,400/month |
| Unit Floor | 2F | Repair Fund | JPY16,240/month |
| Floor Size(sqm) | 86.19 m ² | Other Fee | - |
| Floor Size(sqft) | 927.74 ft ² | Total Monthly Fee | JPY39,640/month |
| Balcony | 12.37 m ² | Current Status | Vacant |
| Facing | West | Hand Over | Negotiable |
| Unit Facilities | Pet friendly, Auto lock, Renovated, Separated Toilet, Balcony, Musical Instrument Negotiable, CS/CATV, Flooring, Dishwasher, Bathroom dryer | | |

| Building Information | | | |
|-------------------------|---|------------|------------|
| Structure | RC 5 floors above | | |
| Total Units | 32 | Completion | Sep, 1985 |
| Car Parking | (Not Included) | Pet | Negotiable |
| Developer Name | Yuraku Tochi | | |
| Management company&Type | Taisei Yuraku Real Estate Fully Outsourced / Day Shift | | |
| Common Facility | Motorcycle Parking (TBC), Janitor, Elevator, Security, New Earthquake Resistance Standard, Low-rise | | |

| Remarks |
|--|
| <Unit/Property Information> [Remarks] Fully renovated in Dec 2022. |
| <Building Information> |
| <Land Information> |

| Land Information | | | |
|--------------------|--|-----------------|-------------|
| Lot Area | 2408.83 m ² | Land lease term | - |
| Ownership Type | Ownership | Land lease fee | - |
| Co-ower's Share | 8619/300238 | Land Category | Residential |
| City Planning area | Urban Planning District | | |
| Use Zoning | Category I exclusively low-rise residential zone | | |
| Current Status | - | Bldg. to Land % | - |
| Hand Over | - | Floor to Land % | - |
| Private Road | - | Set Back | - |
| Other Conditions | | | |