

FOR RENT

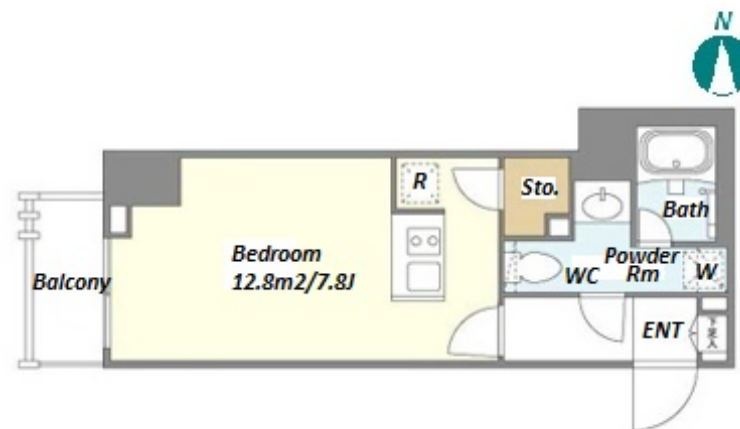
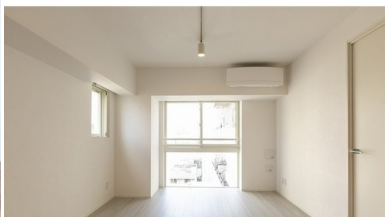
Property ID No. :153186

HOUSEREP TOKYO INC.

Website : www.housserep-tokyo.com

Property Name	ORCHID RESIDENCE RYOGOKU	Unit No.	TYPE	Access	Ryougoku Station on Oedo Line (5 min)
		305	Apt.		
Address	1-6-1, Midori, Sumida-Ku, Tokyo				

Mid rise apartment in TOKYO near Ryogoku Sta.



Lease Conditions			
LAYOUT	Studio		
SIZE	26.69 m²/287.28 ft²		
RENT	JPY 115,000 / month		
Management Fee	JPY12,000/month		
Deposit	1 month	Key Money	-
Lease Term	Standard lease for 24 months		
Available	End, Apr, 2024		
Renewal Fee	1 month		
Agent Fee	1 month + tax		
Other Info	Key Replacement Fee : JPY20,000 Tax not included / Guarantor Company : TBC / No Key Money / Auto lock / Air-Con / Separated Toilet / Balcony / Internet (Extra Charge) / Penalty Fee for Early Cancellation / Flooring / Bathroom dryer		

Building Information			
Completion	Feb, 2020	Earthquake Resistance	New
Structure	RC, 8 story		
Car Parking	TBC		
Bicycle Parking	extra charge		
Music Instrument	-	Pet	Allowed
Facilities	Motorcycle Parking (extra charge) / Janitor / Delivery box / Elevator / Security / Close to Station / Newly-built (~7 y/o)		

Remarks
Renters Insurance : Required / Pet:additional deposit ( 1 month ) + depreciation fee ( 1 month ) / Pet : a small dog or up to two cats

\*The actual Layout & Size may differ slightly from this floor plans & pictures.



HOUSEREP TOKYO INC.

ハウスレップトーキョー株式会社

#301, 1-4-15, Hiroo, Shibuya-ku, Tokyo 150-0012, Japan

+81 (0)3 6427 5860 inquiry@housserep-tokyo.com

Transaction Type : Intermediate

Agent Fee : 1 month + tax

Website : www.housserep-tokyo.com

