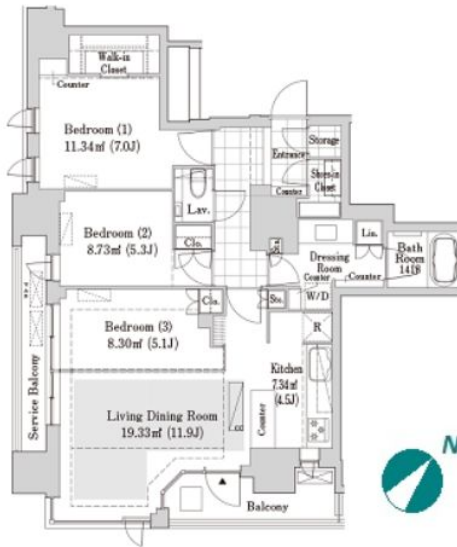
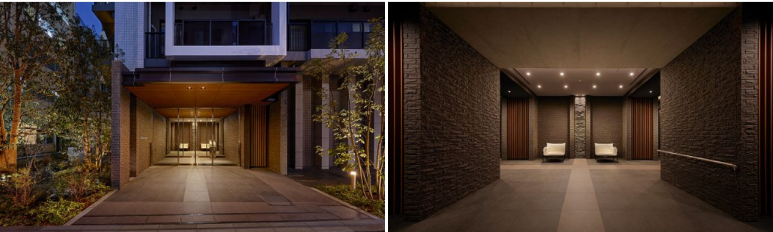



FOR RENT		Property ID No. :153177				HOUSEREP TOKYO INC.		Website : www.housserep-tokyo.com	
Property Name	LIV CUORE JIMBOCHO			Unit No.	TYPE	Access	Jinnbouchou Station on Hanzomon Line (5 min) Jinnbouchou Station on Mita Line (5 min) Suidobashi Station on JR Chuo Line Rapid Service (7 min)		
				1403	Apt.				
Address	1-62-2, Kandajimbocho, Chiyoda-Ku, Tokyo								

Stylish modern apartment in Jimbocho, Chiyoda



Lease Conditions			
LAYOUT	3 BR		
SIZE	81.19 m²/873.92 ft²		
RENT	JPY 528,000 / month		
Management Fee	JPY20,000/month		
Deposit	2 months	Key Money	1 month
Lease Term	Standard lease for 24 months		
Available	Mid, May, 2024		
Renewal Fee	1 month		
Agent Fee	1 month + tax		
Other Info	Key Replacement Fee : JPY22,000 Tax not included / Auto lock / Air-Con / Separated Toilet / Internet Included / Internet (Extra Charge) / Penalty Fee for Early Cancellation / Flooring / Floor Heating / Bathroom dryer / WIC / Corner Unit		
Building Information			
Completion	Dec, 2020	Earthquake Resistance	New
Structure	RC, 14 story		
Car Parking	TBC		
Bicycle Parking	TBC		
Music Instrument	-	Pet	
Facilities	Motorcycle Parking (TBC) / Janitor / Delivery box / Elevator / Security / Close to Station / 24h Garbage Drop-off		
Remarks			
Renters Insurance : Required / Pet:additional deposit (1 month)			

*The actual Layout & Size may differ slightly from this floor plans & pictures.



HOUSEREP TOKYO INC.

ハウスレップトーキョー株式会社

#301, 1-4-15, Hiroo, Shibuya-ku, Tokyo 150-0012, Japan

+81 (0)3 6427 5860 inquiry@housserep-tokyo.com

Transaction Type : Intermediate

Agent Fee : 1 month + tax

Website : www.housserep-tokyo.com

