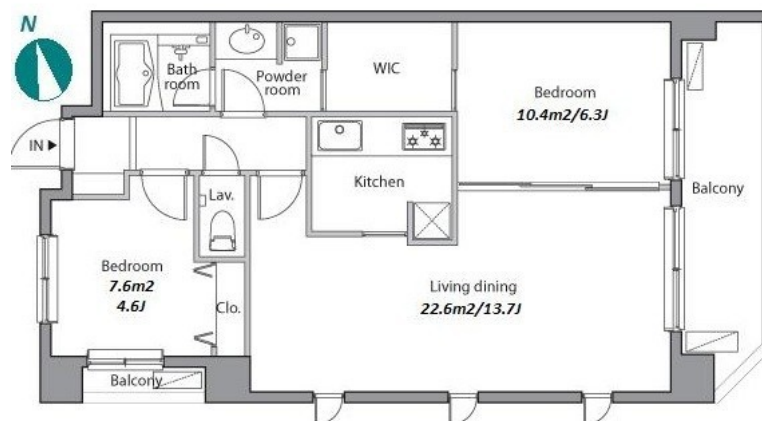
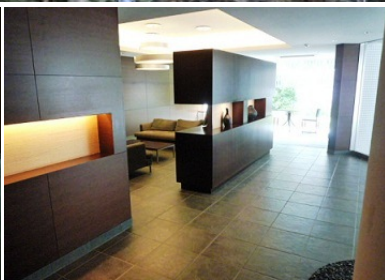


Property Name	RESIDIA YUTENJI	Unit No.	TYPE	Access	Yuutennji Station on Toyoko Line (5 min)
		516	Apt.		
Address	5-27-18, Nakameguro, Meguro-Ku, Tokyo				

Stylish Residence in Yutenji / Nakameguro



Lease Conditions			
LAYOUT	2 BR		
SIZE	60.74 m ² /653.79 ft ²		
RENT	JPY 305,000 / month		
Management Fee	JPY15,000/month		
Deposit	1 month	Key Money	1 month
Lease Term	Standard lease for 24 months		
Available	Mid, Jun, 2024		
Renewal Fee	1 month		
Agent Fee	1 month + tax		
Other Info	Key Replacement Fee : JPY18,000 Tax not included / Guarantor Company : TBC / Auto lock / Air-Con / Separated Toilet / Balcony / Internet (Extra Charge) / Penalty Fee for Early Cancellation / Flooring / Bathroom dryer / WIC / Corner Unit		

Building Information			
Completion	Sep, 2006	Earthquake Resistance	New
Structure	RC, 7 story		
Car Parking	TBC		
Bicycle Parking	TBC		
Music Instrument	-	Pet	Allowed
Facilities	Motorcycle Parking (extra charge) / Within 20 min to Roppongi by train / Near Large Parks / Delivery box / Elevator / Security / Close to Station		

Remarks
Renters Insurance : Required / Tenant support fee: JPY.10,000+tax/2years Internet fee: JPY.1,500+tax/month / Pet:additional deposit (1 month) / Pet : a small dog or a cat

*The actual Layout & Size may differ slightly from this floor plans & pictures.



HOUSEREP TOKYO INC.

ハウスレップトーキョー株式会社

#301, 1-4-15, Hiroo, Shibuya-ku, Tokyo 150-0012, Japan

+81 (0)3 6427 5860

inquiry@housserrep-tokyo.com

Transaction Type : Intermediate

Agent Fee : 1 month + tax

Website : www.housserrep-tokyo.com

