

FOR RENT

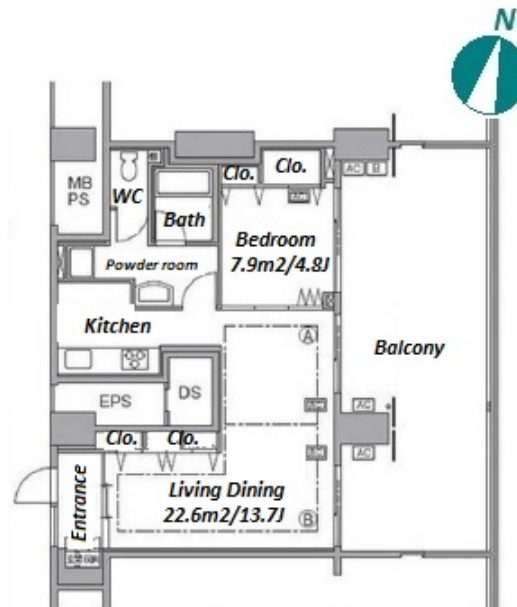
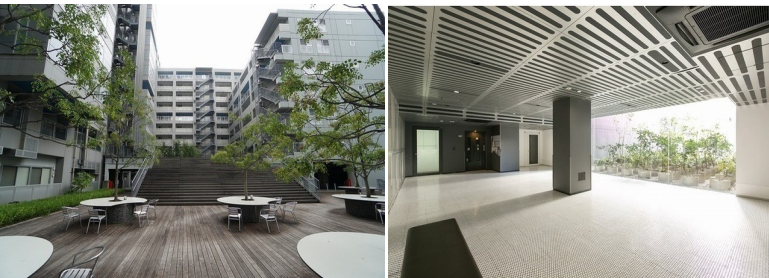
Property ID No. :153124

HOUSEREP TOKYO INC.

Website : www.houserep-tokyo.com

Property Name	SHINONOME CANNAL COURT CODAN 17	Unit No.	TYPE	Access	Tatsumi Station on Yurakucho Line (9 min) Shinonome Station on Rinkai Line (10 min)
		308	Apt.		
Address	1-9-17, Shinonome, Koto-Ku, Tokyo				

Modern Mid Rise Large-scale Apt. in Shinonome



Lease Conditions			
LAYOUT	1 BR		
SIZE	60.44 m²/650.57 ft²		
RENT	JPY 174,000 / month		
Management Fee	JPY15,000/month		
Deposit	1 month	Key Money	1 month
Lease Term	Standard lease for 24 months		
Available	End, Mar, 2024		
Renewal Fee	1 month		
Agent Fee	1 month + tax		
Other Info	Key Replacement Fee : JPY30,000 Tax not included / Auto lock / Air-Con / Separated Toilet / Balcony / Internet (Extra Charge) / Flooring / Floor Heating / Bathroom dryer		

Building Information			
Completion	Mar, 2004	Earthquake Resistance	New
Structure	RC, 14 story		
Car Parking	extra charge		
Bicycle Parking	(Included)		
Music Instrument	-	Pet	N/A
Facilities	Motorcycle Parking (extra charge) / Within 20 min to Tokyo station by car / Near Large Parks / Elevator		

Remarks
Renters Insurance : Required

*The actual Layout & Size may differ slightly from this floor plans & pictures.



HOUSEREP TOKYO INC.

ハウスレップトーキョー株式会社

#301, 1-4-15, Hiroo, Shibuya-ku, Tokyo 150-0012, Japan

+81 (0)3 6427 5860

inquiry@houserep-tokyo.com

Transaction Type : Intermediate

Agent Fee : 1 month + tax

Website : www.houserep-tokyo.com

