

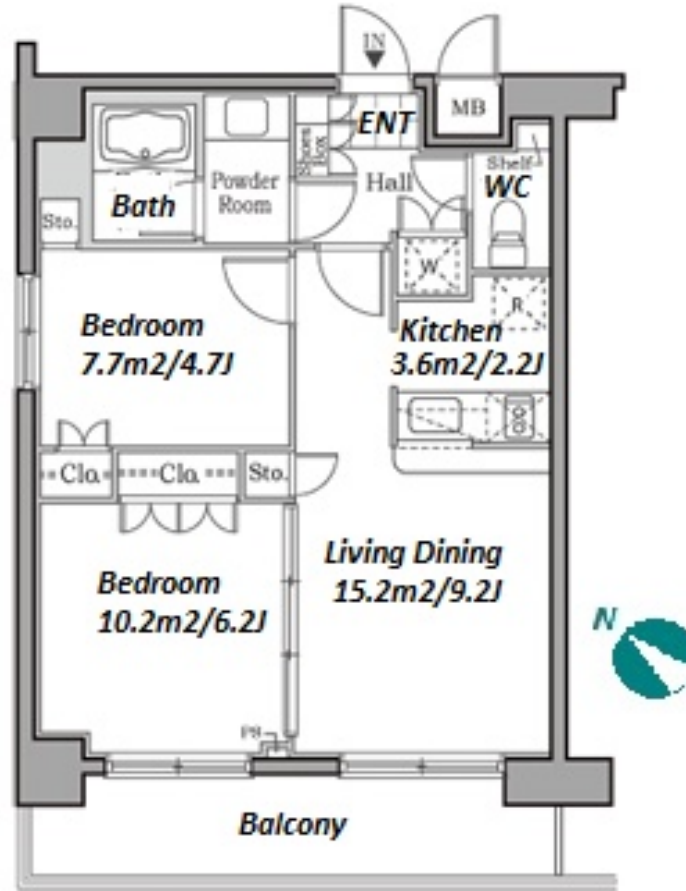
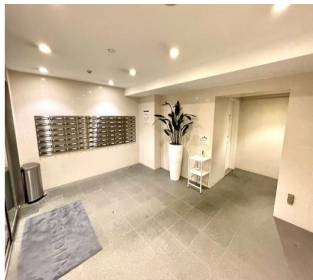
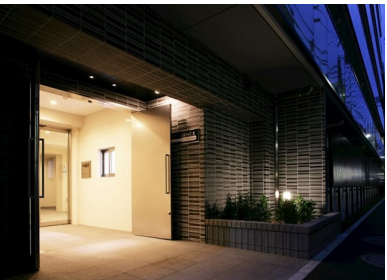
FOR RENT

Property ID No. :153068

HOUSEREP TOKYO INC.

Website : www.housserep-tokyo.com

Property Name	RESIDIA YOGA	Unit No.	TYPE	Access	Youga Station on Denentoshi Line (2 min) Sakurashinnmachi Station on Denentoshi Line (17 min)
		502	Apt.		
Address	2-32-8, Yoga, Setagaya-Ku, Tokyo				



*The actual Layout & Size may differ slightly from this floor plans & pictures.

Lease Conditions			
LAYOUT	2 BR		
SIZE	50.4 m²/542.5 ft²		
RENT	JPY 235,000 / month		
Management Fee	JPY15,000/month		
Deposit	2 months	Key Money	1 month
Lease Term	Standard lease for 24 months		
Available	Early, Jun, 2024		
Renewal Fee	1 month		
Agent Fee	1 month + tax		
Other Info	Key Replacement Fee : JPY20,000 Tax not included / Guarantor Company : TBC / Auto lock / Air-Con / Separated Toilet / Balcony / Internet (Extra Charge) / Penalty Fee for Early Cancellation / CS/CATV / Flooring / Bathroom dryer		

Building Information			
Completion	Jun, 2008	Earthquake Resistance	New
Structure	RC, 6 story		
Car Parking	-		
Bicycle Parking	-		
Music Instrument	-	Pet	Allowed
Facilities	Delivery box / Elevator / Security / Close to Station		

Remarks
Renters Insurance : Required / Tenant support fee: JPY.10,000+tax/2years Internet fee: JPY.2,000+tax/month / Pet:additional deposit (1 month) / Pet : a small dog or a cat



HOUSEREP TOKYO INC.

ハウスレップトーキョー株式会社

#301, 1-4-15, Hiroo, Shibuya-ku, Tokyo 150-0012, Japan

+81 (0)3 6427 5860

inquiry@housserep-tokyo.com

Transaction Type : Intermediate

Agent Fee : 1 month + tax

Website : www.housserep-tokyo.com

