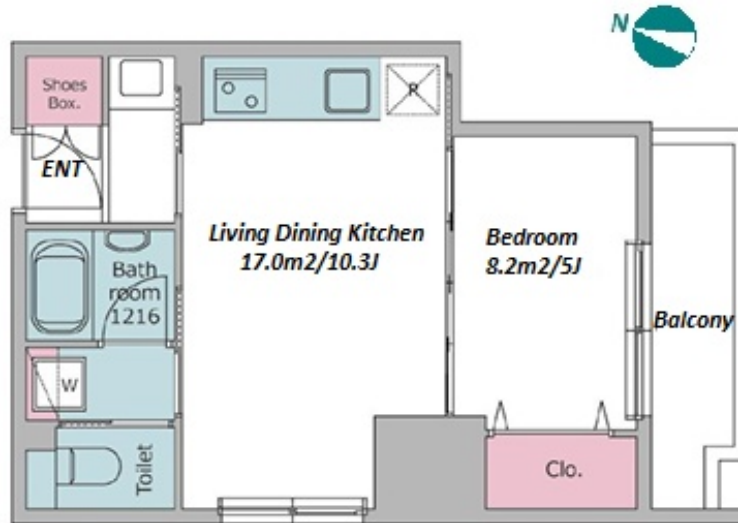
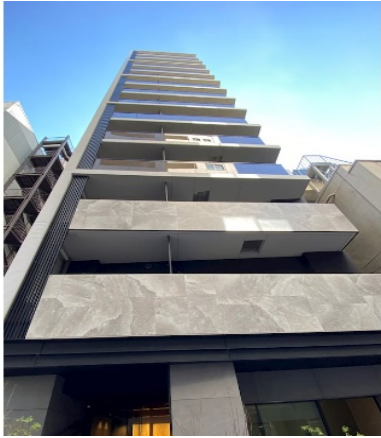


Property Name	CROSS RESIDENCE NIHONBASHIHONCHO	Unit No.	TYPE	Access	Kodenmachou Station on Hibiya Line (2 min) Shinnnihonnbashi Station on JR Sobu Line (2 min)
		1303	Apt.		
Address	4-15-5, Nihombashihoncho, Chuo-Ku, Tokyo				



Lease Conditions

LAYOUT	1 BR		
SIZE	38.53 m ² /414.73 ft ²		
RENT	JPY 204,000 / month		
Management Fee	JPY15,000/month		
Deposit	2 months	Key Money	-
Lease Term	Standard lease for 24 months		
Available	Now		
Renewal Fee	1 month		
Agent Fee	1 month + tax		
Other Info	Guarantor Company : TBC / No Key Money / Free rent / Auto lock / Air-Con / Separated Toilet / Balcony / Penalty Fee for Early Cancellation / Bathroom dryer		

Building Information

Completion	Oct, 2023	Earthquake Resistance	New
Structure	RC, 15 story		
Car Parking	N/A		
Bicycle Parking	for 1 space JPY300 + tax / month		
Music Instrument	-	Pet	Negotiable
Facilities	Delivery box / Elevator / Security / Close to Station / High-rise / Newly-built (~1 y/o)		

Remarks

Renters Insurance : Required

*The actual Layout & Size may differ slightly from this floor plans & pictures.



HOUSE REP TOKYO INC.

ハウスレップトーキョー株式会社

#301, 1-4-15, Hiroo, Shibuya-ku, Tokyo 150-0012, Japan

+81 (0)3 6427 5860 inquiry@houserep-tokyo.com

Transaction Type : Intermediate

Agent Fee : 1 month + tax

Website : www.houserep-tokyo.com

