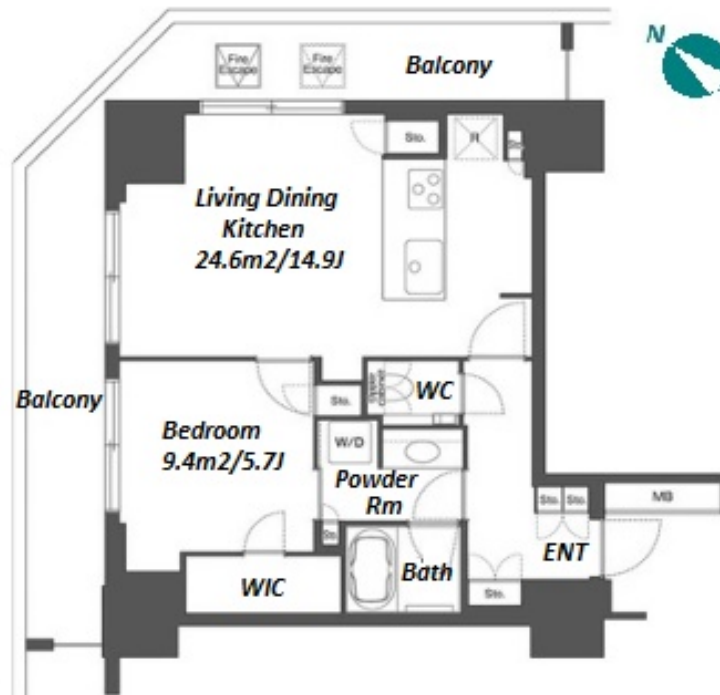
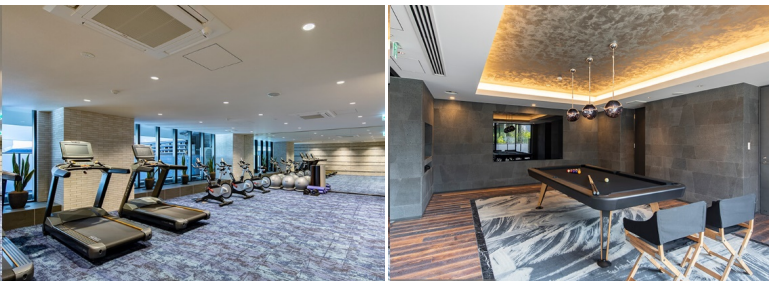


Property Name	TOKYO PORT CITY TAKESHIBA RESIDENCE TOWER	Unit No.	TYPE	Access	Takeshiba Station on (1 min) Hamamatsuchou Station on JR Yamanote Line (7 min) Daimonn Station on Oedo Line (8 min)
		1010	Apt.		
Address	1-13-15, Kaigan, Minato-Ku, Tokyo				

Water Front Residence w/ Variety of Amenities



*The actual Layout & Size may differ slightly from this floor plans & pictures.

Lease Conditions			
LAYOUT	1 BR		
SIZE	53.65 m²/577.48 ft²		
RENT	JPY 308,000 / month		
Management Fee	-		
Deposit	2 months	Key Money	1 month
Lease Term	Standard lease for 24 months		
Available	End, Apr, 2024		
Renewal Fee	1 month		
Agent Fee	1 month + tax		
Other Info	Key Replacement Fee : JPY20,000 Tax not included / Guarantor Company : TBC / Auto lock / Air-Con / Separated Toilet / Balcony / Internet (Extra Charge) / Floor Heating / Dishwasher / Bathroom dryer / WIC		
Building Information			
Completion	Jun, 2020	Earthquake Resistance	New
Structure	RC, 18 story		
Car Parking	extra charge		
Bicycle Parking	extra charge		
Music Instrument	-	Pet	Negotiable * a small dog or a cat
Facilities	Trunk Room (extra charge) / Gym ((Included)) / Within 20 min to Roppongi by train / Near Large Parks / Delivery box / Elevator		

Remarks
Renters Insurance : Required / Gym : Fitness Room (for the residents lives upper than 5th floor) / Pet : a small dog or a cat



HOUSEREP TOKYO INC.

ハウスレップトーキョー株式会社

#301, 1-4-15, Hiroo, Shibuya-ku, Tokyo 150-0012, Japan

+81 (0)3 6427 5860

inquiry@housserrep-tokyo.com

Transaction Type : Intermediate

Agent Fee : 1 month + tax

Website : www.housserrep-tokyo.com

