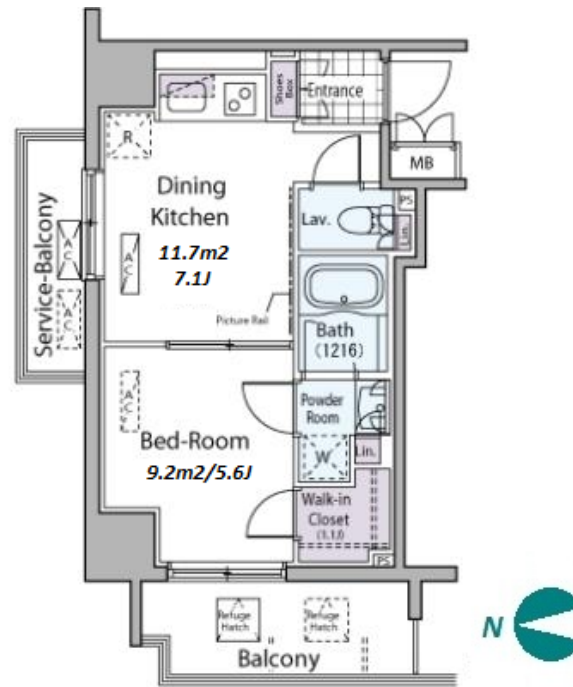


| | | | | | |
|---------------|--------------------------------------|----------|------|--------|---|
| Property Name | PARK AXIS MOTOASAKUSA STAGE | Unit No. | TYPE | Access | Shinnokachimachi Station on Oedo Line (2 min) Inarichou Station on Ginza Line (8 min) Kuramae Station on Toei Asakusa Line (11 min) |
| | | 901 | Apt. | | |
| Address | 1-8-11, Motoasakusa, Taito-Ku, Tokyo | | | | |



Lease Conditions

| | | | |
|----------------|---|-----------|---------|
| LAYOUT | 1 BR | | |
| SIZE | 31.87 m²/343.04 ft² | | |
| RENT | JPY 141,000 / month | | |
| Management Fee | JPY8,000/month | | |
| Deposit | 2 months | Key Money | 1 month |
| Lease Term | Standard lease for 24 months | | |
| Available | End, Apr, 2024 | | |
| Renewal Fee | 1 month | | |
| Agent Fee | 1 month + tax | | |
| Other Info | Key Replacement Fee : JPY20,000 Tax not included / Guarantor Company : TBC / Auto lock / Air-Con / Separated Toilet / Balcony / Musical Instrument Negotiable / CS/CATV / Flooring / Bathroom dryer / WIC | | |

Building Information

| | | | |
|------------------|---|-----------------------|---------|
| Completion | Apr, 2008 | Earthquake Resistance | New |
| Structure | RC, 16 story | | |
| Car Parking | TBC | | |
| Bicycle Parking | for 1 space (Included) | | |
| Music Instrument | Negotiable | Pet | Allowed |
| Facilities | Motorcycle Parking (TBC) / Delivery box / Elevator / Close to Station / High-rise | | |

Remarks

| |
|--|
| <p>Renters Insurance : Required / Pet:additional deposit (1 month) / Pet : a small dog or up to two cats</p> |
|--|

*The actual Layout & Size may differ slightly from this floor plans & pictures.



HOUSEREP TOKYO INC.

ハウスレップトーキョー株式会社

#301, 1-4-15, Hiroo, Shibuya-ku, Tokyo 150-0012, Japan

+81 (0)3 6427 5860

inquiry@housserep-tokyo.com

Transaction Type : Intermediate

Agent Fee : 1 month + tax

Website : www.housserep-tokyo.com

