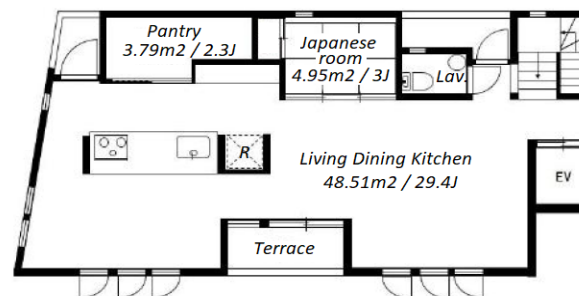


Property Name	SUN TERRACE TOMIGAYA (A)	Unit No.	TYPE	Access	Yoyogihachimann Station on Odakyu Line (5 min) Yoyogikouenn Station on Chiyoda Line (5 min)
		A	House		
Address	1-32-20, Tomigaya, Shibuya-Ku, Tokyo				

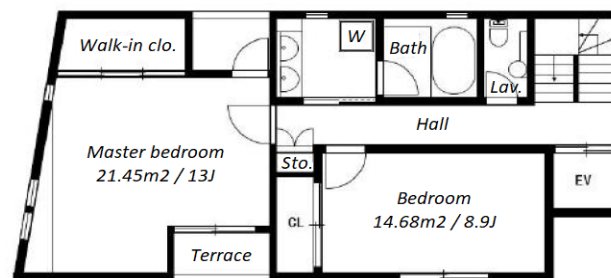
Luxury Town House near Yoyogi Park



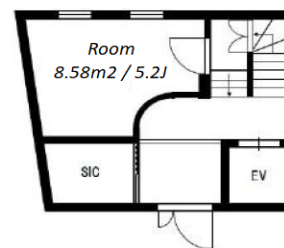
【2F】



【1F】



【B1】



*The actual Layout & Size may differ slightly from this floor plans & pictures.

Lease Conditions			
LAYOUT	2 BR+S		
SIZE	162.29 m²/1746.87 ft²		
RENT	JPY 850,000 / month		
Management Fee	-		
Deposit	2 months	Key Money	1 month
Lease Term	Standard lease for 24 months		
Available	Negotiable		
Renewal Fee	1 month		
Agent Fee	1 month + tax		
Other Info	Guarantor Company : TBC / Auto lock / Fridge / Air-Con / Separated Toilet / Balcony / Internet Included / Flooring / Floor Heating / Curtain / Washer / Dryer / Dishwasher / Oven / WIC / High Ceiling (above 2.5m) / 2 Toilets		

Building Information			
Completion	Sep, 2018	Earthquake Resistance	New
Structure	, 2 story		
Car Parking	(Included)		
Bicycle Parking	-		
Music Instrument	-	Pet	
Facilities	House / Near Large Parks / Delivery box / Elevator / Security / Close to Station / Newly-built (~7 y/o)		

Remarks
Renters Insurance : Required / Parking : w/ garage / Pet:additional deposit (1 month) + depreciation fee (1 month)



HOUSEREP TOKYO INC.

ハウスレップトーキョー株式会社

#301, 1-4-15, Hiroo, Shibuya-ku, Tokyo 150-0012, Japan

+81 (0)3 6427 5860

inquiry@housserrep-tokyo.com

Transaction Type : Intermediate

Agent Fee : 1 month + tax

Website : www.housserrep-tokyo.com

