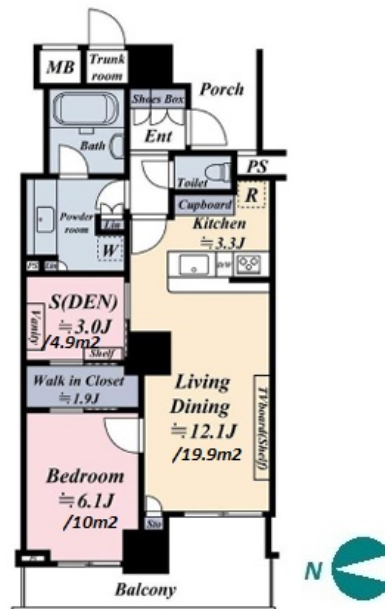
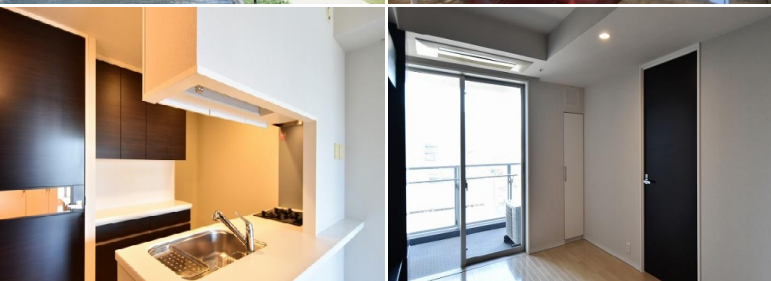
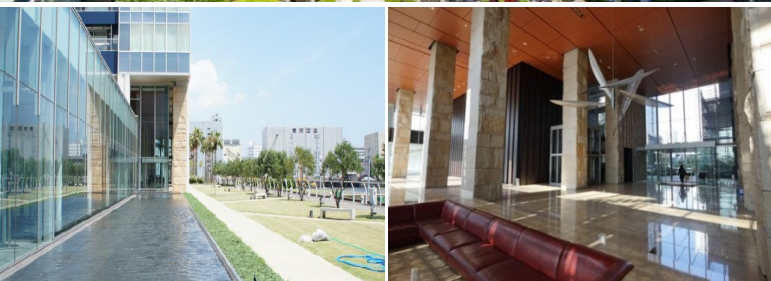


Property Name	WORLD CITY TOWERS AQUA TOWER	Unit No.	TYPE	Access	Tennnouzuairu Station on Rinkai Line (8 min) Shinagawa Station on JR Yamanote Line (16 min)
		A3 12F	Apt.		
Address	4-6-3, Konan, Minato-Ku, Tokyo				

Large-scale luxury condominium apartment in Shinagawa Konan area



Lease Conditions			
LAYOUT	1 BR+Den		
SIZE	59.95 m ² /645.29 ft ²		
RENT	JPY 285,000 / month		
Management Fee	JPY20,000/month		
Deposit	2 months	Key Money	1 month
Lease Term	Standard lease for 24 months		
Available	Ask for Details		
Renewal Fee	1 month		
Agent Fee	1 month + tax		
Other Info	Guarantor Company : TBC / Auto lock / Air-Con / Separated Toilet / Balcony / Musical Instrument Negotiable / Nice Views / Flooring / Floor Heating / Dishwasher / Bathroom dryer / WIC		

Building Information			
Completion	Oct, 2005	Earthquake Resistance	New
Structure	RC, 42 story		
Car Parking	JPY33,000 + tax / month		
Bicycle Parking	TBC		
Music Instrument	Negotiable	Pet	N/A
Facilities	Motorcycle Parking (extra charge) / Trunk Room (extra charge) / Gym (extra charge) / pool / Front desk / Concierge / Delivery box / Elevator / Sky lounge / Fitness / Gym / High-rise		

Remarks
Renters Insurance : Required

*The actual Layout & Size may differ slightly from this floor plans & pictures.



HOUSEREP TOKYO INC.

ハウズレップトーキョー株式会社

#301, 1-4-15, Hiroo, Shibuya-ku, Tokyo 150-0012, Japan

+81 (0)3 6427 5860

inquiry@housserep-tokyo.com

Transaction Type : Intermediate

Agent Fee : 1 month + tax

Website : www.housserep-tokyo.com

