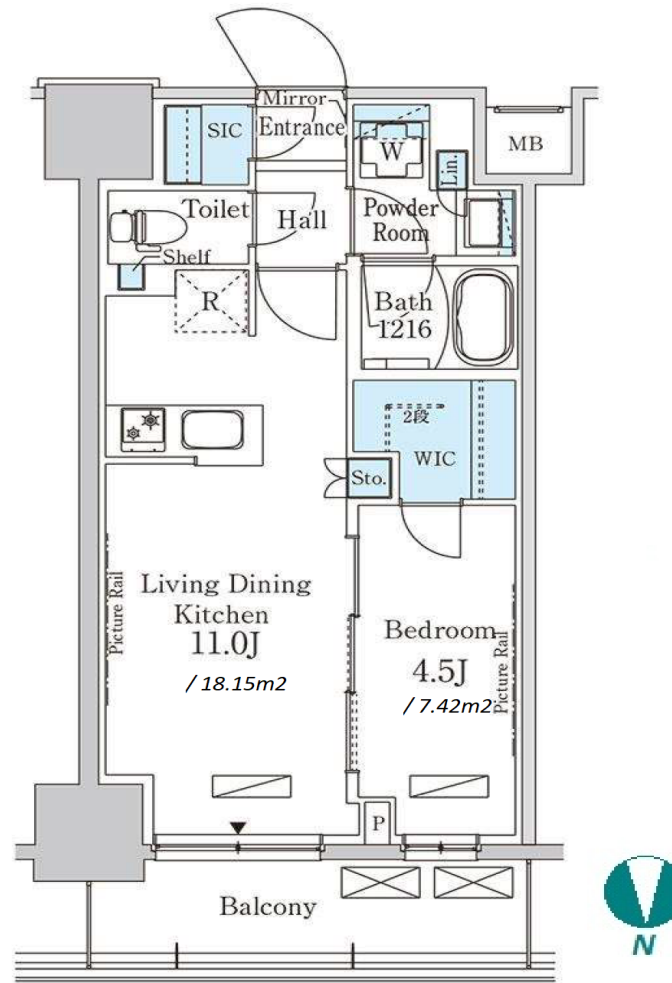


Property Name	PARK AXIS KINSHIKOEN	Unit No.	TYPE	Access	Kinnsichou Station on Hanzomon Line (5 min) Kinnsichou Station on JR Chuo-Sobu Line (6 min)
		703	Apt.		
Address	4-10-4, Kinshi, Sumida-Ku, Tokyo				



*The actual Layout & Size may differ slightly from this floor plans & pictures.

Lease Conditions		
LAYOUT	1 BR	
SIZE	39.1 m ² /420.86 ft ²	
RENT	JPY 182,000 / month	
Management Fee	JPY18,000/month	
Deposit	2 months	Key Money -
Lease Term	Standard lease for 24 months	
Available	Early, Mar, 2024	
Renewal Fee	1 month	
Agent Fee	1 month + tax	
Other Info	Key Replacement Fee : JPY15,000 Tax not included / Guarantor Company : TBC / No Key Money / Free rent / Auto lock / Air-Con / Separated Toilet / Balcony / Penalty Fee for Early Cancellation / Musical Instrument Negotiable / CS/CATV / Flooring / Bathroom dryer / WIC	

Building Information			
Completion	Apr, 2023	Earthquake Resistance	New
Structure	RC, 14 story		
Car Parking	JPY30,000 + tax / month		
Bicycle Parking	for 1 space (Included)		
Music Instrument	Negotiable	Pet	
Facilities	Delivery box / Elevator / Close to Station / Newly-built (~1 y/o)		

Remarks
Renters Insurance : Required / Bicycle parking : registration fee : JPY1,000+tax / Pet:additional deposit (1 month)



HOUSEREP TOKYO INC.

ハウスレプトーキョー株式会社

#301, 1-4-15, Hiroo, Shibuya-ku, Tokyo 150-0012, Japan

+81 (0)3 6427 5860

inquiry@housserep-tokyo.com

Transaction Type : Intermediate

Agent Fee : 1 month + tax

Website : www.housserep-tokyo.com

