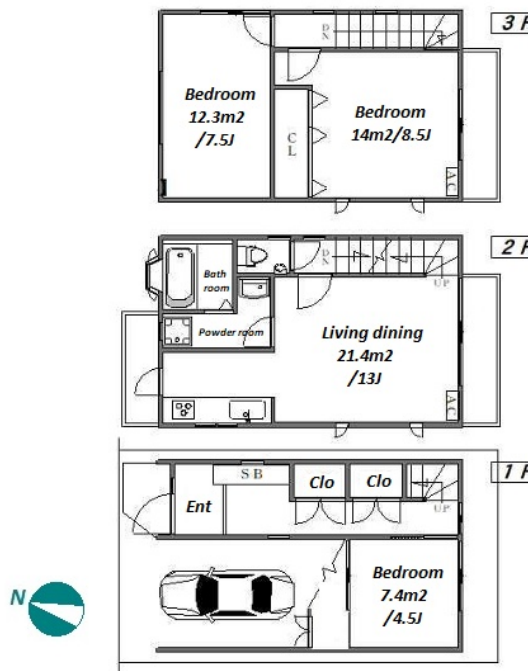
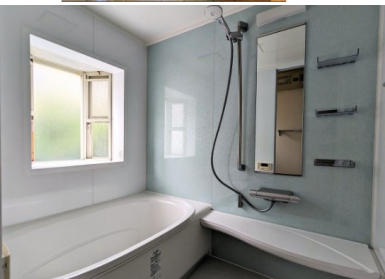
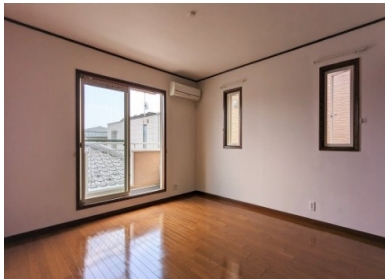


Property Name	SENDAGI 5CHOME HOUSE	Unit No.	TYPE	Access	Senndagi Station on Chiyoda Line (8 min) Nishinippori Station on JR Yamanote Line (10 min) Honkomagome Station on Namboku Line (11 min)
			House		
Address	5-22-6, Sendagi, Bunkyo-Ku, Tokyo				

Stylish 3story house near Sendagi Station



Lease Conditions			
LAYOUT	3 BR		
SIZE	87 m ² /936.46 ft ²		
RENT	JPY 280,000 / month		
Management Fee	-		
Deposit	1 month	Key Money	1 month
Lease Term	Standard lease for 24 months		
Available	Now		
Renewal Fee	1 month		
Agent Fee	1 month + tax		
Other Info	Guarantor Company : TBC / Air-Con / Separated Toilet / Balcony / CS/CATV / Flooring / Bathroom dryer		

Building Information			
Completion	Dec, 1992	Earthquake Resistance	New
Structure	Wooden, 3 story		
Car Parking	(Included)		
Bicycle Parking	(Included)		
Music Instrument	-	Pet	
Facilities	Motorcycle Parking ((Included)) / House		

Remarks
Renters Insurance : Required / Pet:additional deposit (1 month)

*The actual Layout & Size may differ slightly from this floor plans & pictures.



HOUSEREP TOKYO INC.

ハウスレップトーキョー株式会社

#301, 1-4-15, Hiroo, Shibuya-ku, Tokyo 150-0012, Japan

+81 (0)3 6427 5860

inquiry@housserep-tokyo.com

Transaction Type : Intermediate

Agent Fee : 1 month + tax

Website : www.housserep-tokyo.com

