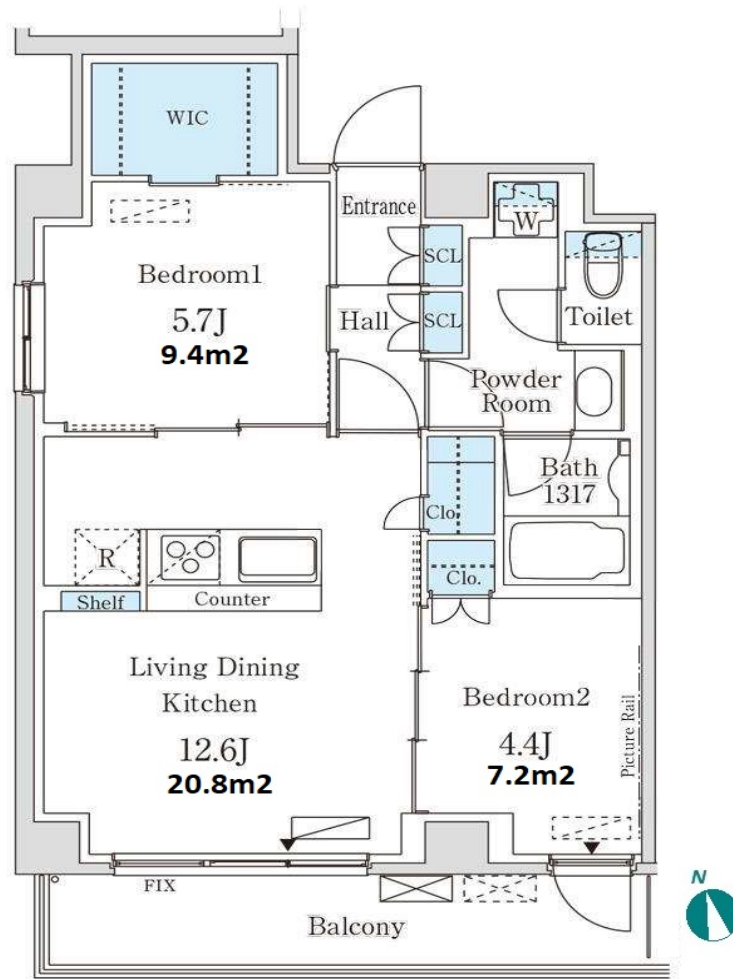


Property Name	INSTYLE RESIDENCE HONKOMAGOME	Unit No.	TYPE	Access	Honнкомagome Station on Namboku Line (11 min) Tabata Station on JR Yamanote Line (11 min)
		301	Apt.		
Address	4-19-1, Honkomagome, Bunkyo-Ku, Tokyo				

Mid rise apartment in TOKYO near Honkomagome Sta.



\*The actual Layout & Size may differ slightly from this floor plans & pictures.

Lease Conditions			
LAYOUT	2 BR		
SIZE	55.24 m <sup>2</sup> /594.59 ft <sup>2</sup>		
RENT	JPY 196,000 / month		
Management Fee	JPY12,000/month		
Deposit	2 months	Key Money	2 months
Lease Term	Standard lease for 24 months		
Available	Mid, Mar, 2024		
Renewal Fee	1 month		
Agent Fee	1 month + tax		
Other Info	Key Replacement Fee : JPY20,000 Tax not included / Guarantor Company : TBC / Auto lock / Air-Con / Separated Toilet / Balcony / Internet Included / Bathroom dryer		

Building Information			
Completion	May, 1976	Earthquake Resistance	Old
Structure	SRC, 7 story		
Car Parking	for 1 space JPY35,000 + tax / month		
Bicycle Parking	for 1 space ( Included )		
Music Instrument	-	Pet	-
Facilities	Janitor / Delivery box / Elevator / Security		

Remarks
Renters Insurance : Required



HOUSEREP TOKYO INC.

ハウスレップトーキョー株式会社

#301, 1-4-15, Hiroo, Shibuya-ku, Tokyo 150-0012, Japan

+81 (0)3 6427 5860 inquiry@housserep-tokyo.com

Transaction Type : Intermediate

Agent Fee : 1 month + tax

Website : www.housserep-tokyo.com

