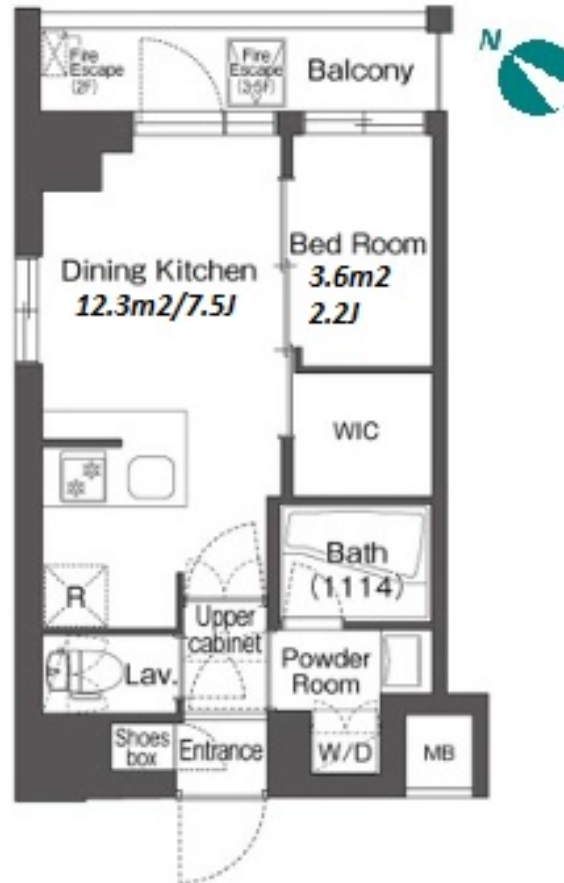


Property Name	COMFORIA FUTABA	Unit No.	TYPE	Access	Nishiooi Station on JR Yokosuka Line (8 min) Shimoshinnmei Station on Oimachi Line (8 min) Ooimachi Station on JR Keihin Tohoku Line (16 min)
		214	Apt.		
Address	2-8-17, Futaba, Shinagawa-Ku, Tokyo				

Stylish Low Rise Apt. in Futaba, near Nishiooi & Ooimachi stn.



*The actual Layout & Size may differ slightly from this floor plans & pictures.

Lease Conditions			
LAYOUT	1 BR		
SIZE	26.08 m²/280.72 ft²		
RENT	JPY 127,000 / month		
Management Fee	JPY10,000/month		
Deposit	2 months	Key Money	-
Lease Term	Standard lease for 24 months		
Available	Now		
Renewal Fee	1 month		
Agent Fee	1 month + tax		
Other Info	Guarantor Company : TBC / No Key Money / Free rent / Auto lock / Air-Con / Separated Toilet / Balcony / Internet Included / Penalty Fee for Early Cancellation / Flooring / Bathroom dryer / WIC		

Building Information			
Completion	Oct, 2023	Earthquake Resistance	New
Structure	RC, 6 story		
Car Parking	-		
Bicycle Parking	(Included)		
Music Instrument	-	Pet	Allowed
Facilities	Motorcycle Parking (JPY3,000 + tax / month) / Near Large Parks / Delivery box / Elevator / 24h Garbage Drop-off / Newly-built (~1 y/o)		

Remarks
Renters Insurance : Required / Pet:additional deposit (1 month) / Pet : a small dog or up to two cats



HOUSEREP TOKYO INC.

ハウズレップトーキョー株式会社

#301, 1-4-15, Hiroo, Shibuya-ku, Tokyo 150-0012, Japan

+81 (0)3 6427 5860 inquiry@housserrep-tokyo.com

Transaction Type : Intermediate

Agent Fee : 1 month + tax

Website : www.housserrep-tokyo.com

