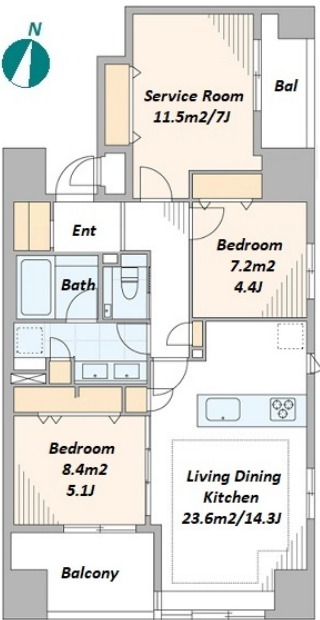


Sales Price	139,900,000 JPY	Access	Ushigomekagurazaka Station on	Oedo Line 1 min. walk
Tax	None		Kagurazaka Station on	Tozai Line 7 min. walk
			Iidabashi Station on	Tozai Line 10 min. walk

2-sided balcony, corner room, natural lighting, fully renovated



\*The actual Layout & Size may differ slightly from this floor plans & pictures.

Remarks
<Unit/Property Information>[Unit Facilities] Home Loan Tax Deduction [Remarks] Internet fee: JPY1,320/month
<Building Information>[Common Facilities] High-rise
<Land Information>



HOUSEREP TOKYO INC.

ハウズレップトーキョー株式会社

#301, 1-4-15, Hiroo, Shibuya-ku, Tokyo 150-0012, Japan

+81 (0)3 6427 5860    [inquiry@houserep-tokyo.com](mailto:inquiry@houserep-tokyo.com)

Transaction Type : Intermediate

Agent Fee : (3%+60,000JPY) + tax

Website : [www.houserep-tokyo.com](http://www.houserep-tokyo.com)



Property Name	RUNE KAGURAZAKA		
Address	3F, 39, Tansumachi, Shinjuku-Ku, Tokyo		
Unit/Property Information			
LAYOUT	2 BR+S	Management Fee	JPY16,000/month
Unit Floor	3F	Repair Fund	JPY12,400/month
Floor Size(sqm)	73.33 m²	Other Fee	JPY1,320/month
Floor Size(sqft)	789.31 ft²	Total Monthly Fee	JPY29,720/month
Balcony	10.27 m²	Current Status	Vacant
Facing	Southeast	Hand Over	Negotiable
Unit Facilities	Pet friendly, Auto lock, Renovated, Air-Con, Separated Toilet, Balcony, Internet (Extra Charge), Floor Heating, Dishwasher, Bathroom dryer, Corner Unit,		
Building Information			
Structure	RC 17 floors above and 1 basement floors		
Total Units	130	Completion	Jul, 2007
Car Parking	( Not Included )	Pet	Negotiable
Developer Name	SOHGOH REAL ESTATE.		
Management company&Type	Haseko Community, Inc. Fully Outsourced / Day Shift		
Common Facility	Motorcycle Parking (JPY3,000 + tax / month), Within 20 min to Tokyo station by car, Delivery box, Elevator, New Earthquake Resistance Standard, Low-rise,		
Land Information			
Lot Area	-	Land lease term	-
Ownership Type	Ownership	Land lease fee	-
Co-ower's Share	-	Land Category	-
City Planning area	-		
Use Zoning	Category I mid/high-rise oriented residential zone		
Current Status	-	Bldg. to Land %	-
Hand Over	-	Floor to Land %	-
Private Road	-	Set Back	-
Other Conditions			