

FOR RENT

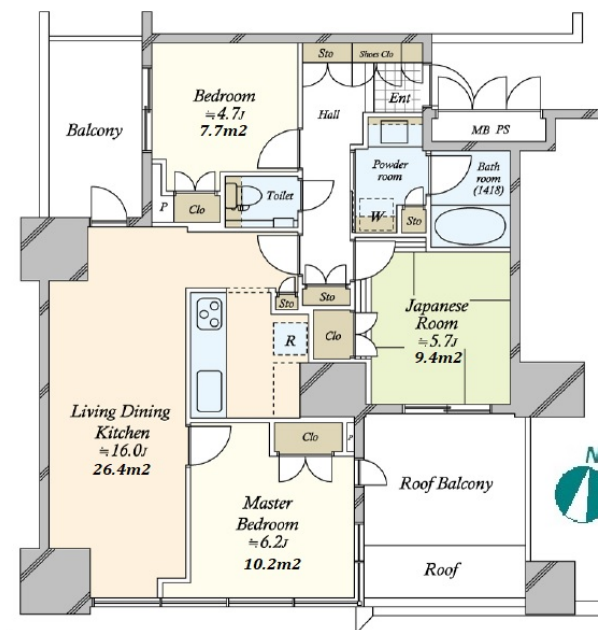
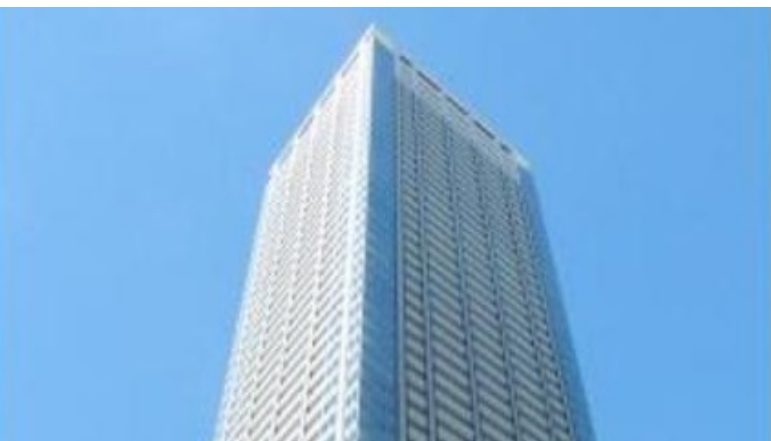
Property ID No. :150991

HOUSEREP TOKYO INC.

Website : www.housserep-tokyo.com

Property Name	CAPITAL GATE PLACE THE TOWER	Unit No.	TYPE	Access	Tsukishima Station on Yurakucho Line (1 min) Tsukishima Station on Oedo Line (1 min)
		701	Apt.		
Address	1-5-1, Tsukishima, Chuo-Ku, Tokyo				

Modern tower residence directly connected to Tsukishima stn.



Lease Conditions			
LAYOUT	2 BR+J		
SIZE	73.84 m²/794.8 ft²		
RENT	JPY 380,000 / month		
Management Fee	JPY20,000/month		
Deposit	2 months	Key Money	1 month
Lease Term	Standard lease for 24 months		
Available	Now		
Renewal Fee	1 month		
Agent Fee	1 month + tax		
Other Info	Auto lock / Separated Toilet / Balcony / Internet (Extra Charge) / CS/CATV / Flooring / Bathroom dryer / Comer Unit		

Building Information			
Completion	Aug, 2015	Earthquake Resistance	New
Structure	RC, 53 story		
Car Parking	TBC		
Bicycle Parking	TBC		
Music Instrument	-	Pet	Allowed
Facilities	Motorcycle Parking (TBC) / Near Large Parks / Janitor / Delivery box / Elevator		

Remarks
Renters Insurance : Required / Pet:additional deposit (1 month)

*The actual Layout & Size may differ slightly from this floor plans & pictures.



HOUSEREP TOKYO INC.

ハウスレップトーキョー株式会社

#301, 1-4-15, Hiroo, Shibuya-ku, Tokyo 150-0012, Japan

+81 (0)3 6427 5860

inquiry@housserep-tokyo.com

Transaction Type : Intermediate

Agent Fee : 1 month + tax

Website : www.housserep-tokyo.com

