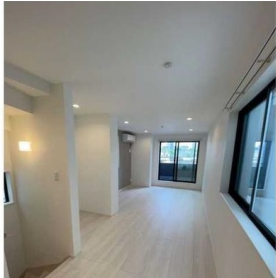


Property Name	KOLET TANMACHI #02	Unit No.	TYPE	Access	Tannmachi Station on Toyoko Line (8 min) Mitsuzawashimochou Station on Blue Line (9 min)
Address	13-4-2, Kuritaya, Kanagawa-Ku, Yokohama-Shi, Kanagawa		House		

Stand alone house located in YOKOHAMA near Tanmachi Sta.



Lease Conditions			
LAYOUT	3 BR		
SIZE	79.46 m²/855.3 ft²		
RENT	JPY 269,000 / month		
Management Fee	-		
Deposit	2 months	Key Money	-
Lease Term	Standard lease for 24 months		
Available	Now		
Renewal Fee	1 month		
Agent Fee	1 month + tax		
Other Info	Guarantor Company : TBC / No Key Money / Air-Con / Separated Toilet / Balcony / Internet (Extra Charge) / Penalty Fee for Early Cancellation / Musical Instrument Negotiable / Flooring / Bathroom dryer		

Building Information			
Completion	May, 2022	Earthquake Resistance	New
Structure	Wooden, 3 story		
Car Parking	for 1 space (Included)		
Bicycle Parking	-		
Music Instrument	Negotiable	Pet	
Facilities	House / Delivery box / Newly-built (~7 y/o)		

Remarks
Renters Insurance : Required / Pet:additional deposit (1 month)

*The actual Layout & Size may differ slightly from this floor plans & pictures.



HOUSEREP TOKYO INC.

ハウスレップトーキョー株式会社

#301, 1-4-15, Hiroo, Shibuya-ku, Tokyo 150-0012, Japan

+81 (0)3 6427 5860 inquiry@housserep-tokyo.com

Transaction Type : Intermediate

Agent Fee : 1 month + tax

Website : www.housserep-tokyo.com

