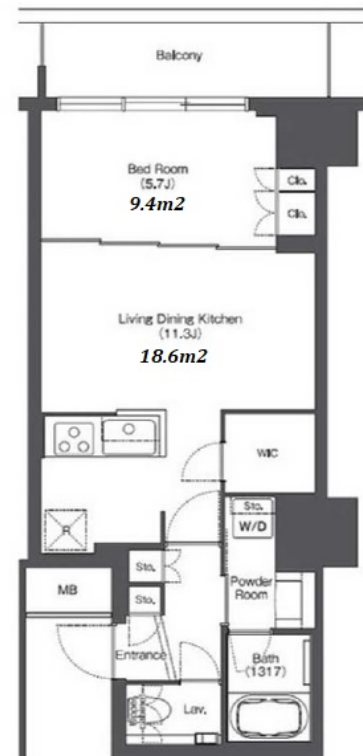
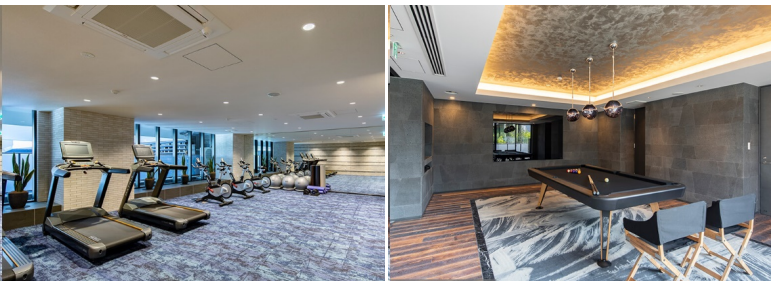


| | | | | | |
|---------------|---|----------|------|--------|---|
| Property Name | TOKYO PORT CITY TAKESHIBA RESIDENCE TOWER | Unit No. | TYPE | Access | Takeshiba Station on (1 min) Hamamatsuchou Station on JR Yamanote Line (7 min) Daimonn Station on Oedo Line (8 min) |
| | | 1705 | Apt. | | |
| Address | 1-13-15, Kaigan, Minato-Ku, Tokyo | | | | |

Water Front Residence w/ Variety of Amenities



*The actual Layout & Size may differ slightly from this floor plans & pictures.

| Lease Conditions | | | |
|------------------|---|-----------|---------|
| LAYOUT | 1 BR | | |
| SIZE | 43.39 m ² /467.04 ft ² | | |
| RENT | JPY 265,000 / month | | |
| Management Fee | - | | |
| Deposit | 2 months | Key Money | 1 month |
| Lease Term | Standard lease for 24 months | | |
| Available | Now | | |
| Renewal Fee | 1 month | | |
| Agent Fee | 1 month + tax | | |
| Other Info | Key Replacement Fee : JPY20,000 Tax not included / Guarantor Company : TBC / Auto lock / Air-Con / Separated Toilet / Balcony / Internet (Extra Charge) / Floor Heating / Dishwasher / Bathroom dryer / WIC | | |

| Building Information | | | |
|----------------------|--|-----------------------|-----------------------------------|
| Completion | Jun, 2020 | Earthquake Resistance | New |
| Structure | RC, 18 story | | |
| Car Parking | extra charge | | |
| Bicycle Parking | extra charge | | |
| Music Instrument | - | Pet | Negotiable * a small dog or a cat |
| Facilities | Trunk Room (extra charge) / Gym ((Included)) / Within 20 min to Roppongi by train / Near Large Parks / Delivery box / Elevator | | |

| Remarks |
|---|
| Renters Insurance : Required / Gym : Fitness Room (for the residents lives upper than 5th floor) / Pet : a small dog or a cat |



HOUSEREP TOKYO INC.

ハウスレップトーキョー株式会社

#301, 1-4-15, Hiroo, Shibuya-ku, Tokyo 150-0012, Japan

+81 (0)3 6427 5860

inquiry@housserep-tokyo.com

Transaction Type : Intermediate

Agent Fee : 1 month + tax

Website : www.housserep-tokyo.com

