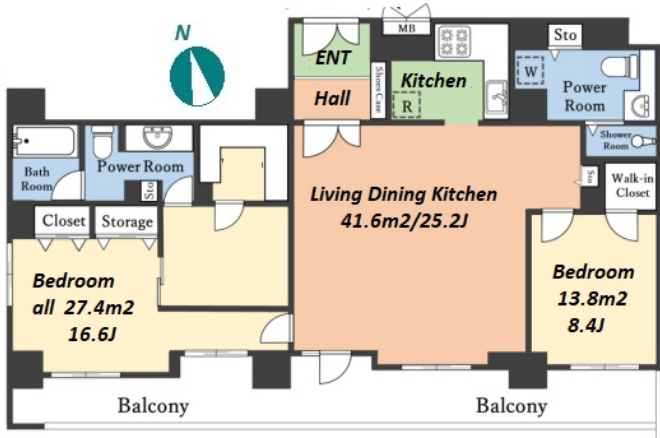


| | | | | | | | | | | | |
|-------------------------|-----------------|---------------------|--------|--|--|--|--|----------------------|--------------|-----------------|--|
| Property ID No. :150450 | | HOUSEREP TOKYO INC. | | Website : www.houserep-tokyo.com | | inquiry@houserep-tokyo.com | | [Apartment] FOR SALE | | Gross Yield : - | |
| Sales Price | 197,000,000 JPY | | Access | Ookubo Station on JR Chuo Rapid Service Line | | 3 min. walk | | Property Name | REGNO SERENO | | |
| | | | | Shinnookubo Station on JR Yamanote Line | | 7 min. walk | | | | | |
| Tax | | | | Seibushinnjuku Station on Seibu Shinjuku Line | | 12 min. walk | | | | | |



*The actual Layout & Size may differ slightly from this floor plans & pictures.

| Remarks |
|---|
| <Unit/Property Information> <Building Information> <Land Information> |

| | | | |
|---|---|--|---|
|  | HOUSEREP TOKYO INC. ハウスレップトーキョー 株式会社 | Transaction Type : Intermediate |  |
| | #301, 1-4-15, Hiroo, Shibuya-ku, Tokyo 150-0012, Japan | Agent Fee : (3%+60,000JPY) + tax | |
| | +81 (0)3 6427 5860 inquiry@houserep-tokyo.com | Website : www.houserep-tokyo.com | |

| | | | |
|---------------------------|---|-------------------|-----------------|
| Address | 19F, 3-2-1, Kitashinjuku, Shinjuku-Ku, Tokyo | | |
| Unit/Property Information | | | |
| LAYOUT | 3 BR | Management Fee | JPY38,600/month |
| Unit Floor | 19F | Repair Fund | JPY47,390/month |
| Floor Size(sqm) | 129.14 m² | Other Fee | - |
| Floor Size(sqft) | 1390.05 ft² | Total Monthly Fee | JPY85,990/month |
| Balcony | 25.19 m² | Current Status | Occupied |
| Facing | - | Hand Over | Negotiable |
| Unit Facilities | Pet friendly, Nice Views | | |
| Building Information | | | |
| Structure | RC 24 floors above and 2 basement floors | | |
| Total Units | 217 | Completion | Apr, 2008 |
| Car Parking | (Not Included) | Pet | Negotiable |
| Developer Name | - | | |
| Management company&Type | Sumitomo fudosan tatemono service Fully Outsourced | | |
| Common Facility | Gym (TBC), Janitor, Elevator, Security, New Earthquake Resistance Standard, Close to Station, Fitness, Gym, High-rise | | |
| Land Information | | | |
| Lot Area | 3215.55 m² | Land lease term | - |
| Ownership Type | Ownership | Land lease fee | - |
| Co-ower's Share | - | Land Category | - |
| City Planning area | - | | |
| Use Zoning | Commercial zone | | |
| Current Status | - | Bldg. to Land % | - |
| Hand Over | - | Floor to Land % | - |
| Private Road | - | Set Back | - |
| Other Conditions | | | |