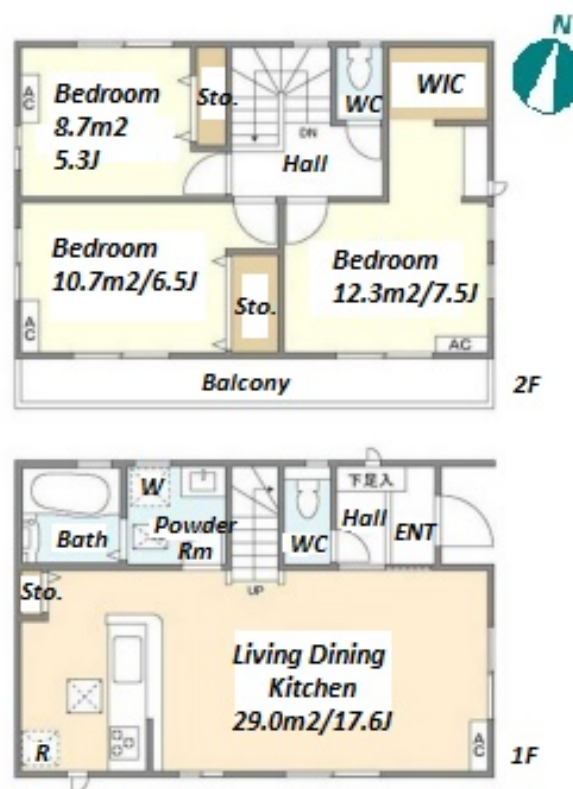
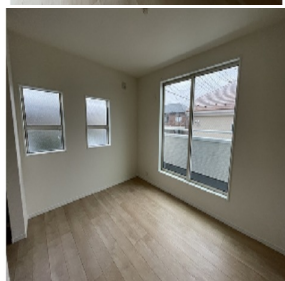
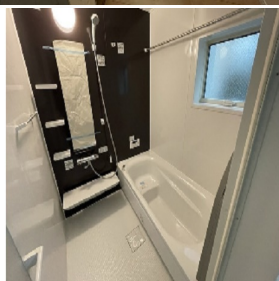
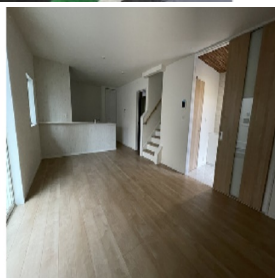
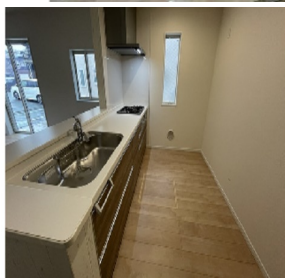


Property Name	KOLET KATSUSHIKA-NISHIMIZUMOTO #06	Unit No.	TYPE	Access	Kanamachi Station on JR Joban Line (34 min)
Address	1-22-13, Nishimizumoto, Katsushika-Ku, Tokyo		House		



Lease Conditions		
LAYOUT	3 BR	
SIZE	87.77 m <sup>2</sup> /944.74 ft <sup>2</sup>	
RENT	JPY 198,000 / month	
Management Fee	-	
Deposit	2 months	Key Money -
Lease Term	Standard lease for 24 months	
Available	Now	
Renewal Fee	1 month	
Agent Fee	1 month + tax	
Other Info	Guarantor Company : TBC / No Key Money / Air-Con / Separated Toilet / Balcony / Internet (Extra Charge) / Penalty Fee for Early Cancellation / Musical Instrument Negotiable / Flooring / Bathroom dryer / 2 Toilets	

Building Information			
Completion	Dec, 2022	Earthquake Resistance	New
Structure	Wooden, 2 story		
Car Parking	( Included )		
Bicycle Parking	-		
Music Instrument	Negotiable	Pet	Negotiable
Facilities	House / Delivery box / Newly-built (~7 y/o)		

Remarks
Renters Insurance : Required / Parking : Electric Vehicle charger: extra charge

\*The actual Layout & Size may differ slightly from this floor plans & pictures.



HOUSEREP TOKYO INC.

ハウスレップトーキョー株式会社

#301, 1-4-15, Hiroo, Shibuya-ku, Tokyo 150-0012, Japan

+81 (0)3 6427 5860 inquiry@housserrep-tokyo.com

Transaction Type : Intermediate

Agent Fee : 1 month + tax

Website : www.housserrep-tokyo.com

