

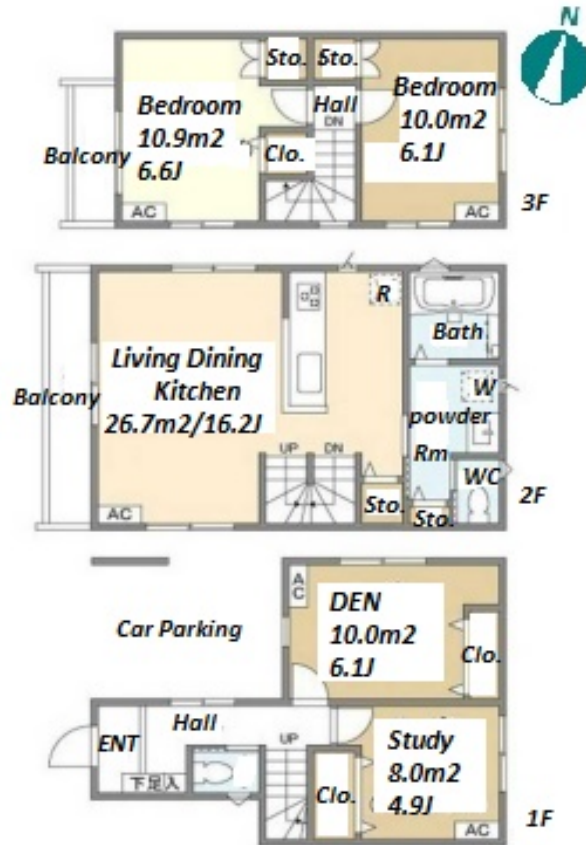
FOR RENT

Property ID No. :150146

HOUSEREP TOKYO INC.

Website : www.houserrep-tokyo.com

Property Name	KOLET NISHISHINKOIWA	Unit No.	TYPE	Access	Shinnkoiwa Station on JR Sobu Line (21 min)
		#04	House		
Address	3-31-1, Nishishinkoiwa, Katsushika-Ku, Tokyo				



## Lease Conditions

LAYOUT	2 BR+S+Den		
SIZE	94.59 m <sup>2</sup> /1018.15 ft <sup>2</sup>		
RENT	JPY 248,000 / month		
Management Fee	-		
Deposit	2 months	Key Money	1 month
Lease Term	Standard lease for 24 months		
Available	Now		
Renewal Fee	1 month		
Agent Fee	1 month + tax		
Other Info	Guarantor Company : TBC / Air-Con / Separated Toilet / Balcony / Internet (Extra Charge) / Penalty Fee for Early Cancellation / Musical Instrument Negotiable / Flooring / Dishwasher / Bathroom dryer / 2 Toilets		

## Building Information

Completion	Jun, 2023	Earthquake Resistance	New
Structure	Wooden, 3 story		
Car Parking	( Included )		
Bicycle Parking	-		
Music Instrument	Negotiable	Pet	Negotiable
Facilities	House / Delivery box / Newly-built (~1 y/o)		

## Remarks

<p>Renters Insurance : Required / Parking : Electric Vehicle charger: extra charge</p>
--

\*The actual Layout &amp; Size may differ slightly from this floor plans &amp; pictures.



HOUSEREP TOKYO INC.

ハウスレップトーキョー株式会社

#301, 1-4-15, Hiroo, Shibuya-ku, Tokyo 150-0012, Japan

+81 (0)3 6427 5860 inquiry@houserrep-tokyo.com

Transaction Type : Intermediate

Agent Fee : 1 month + tax

Website : www.houserrep-tokyo.com

