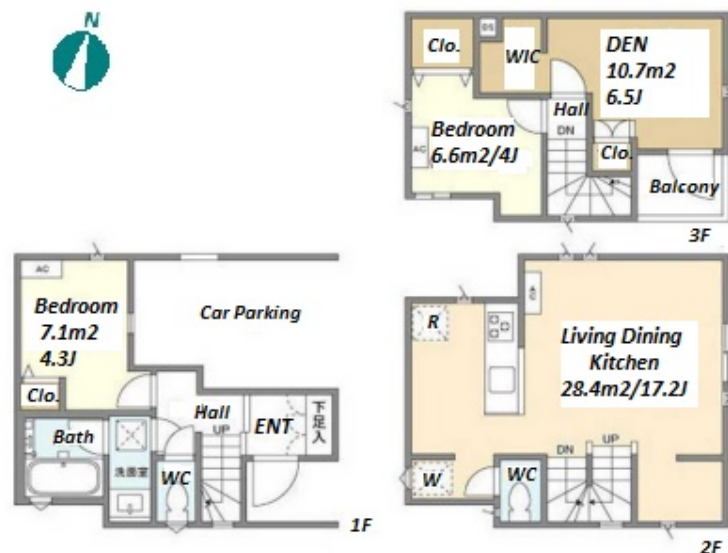


Property Name	KOLET KATSUSHIKA-KAMAKURA #06	Unit No.	TYPE	Access	Keiseikoiwa Station on Keisei Main Line (9 min)
			House		
Address	3-52-16, Kamakura, Katsushika-Ku, Tokyo				



Lease Conditions			
LAYOUT	2 BR+Den		
SIZE	75.34 m <sup>2</sup> /810.95 ft <sup>2</sup>		
RENT	JPY 203,000 / month		
Management Fee	-		
Deposit	2 months	Key Money	-
Lease Term	Standard lease for 24 months		
Available	Now		
Renewal Fee	1 month		
Agent Fee	1 month + tax		
Other Info	Guarantor Company : TBC / No Key Money / Air-Con / Separated Toilet / Balcony / Internet (Extra Charge) / Penalty Fee for Early Cancellation / Musical Instrument Negotiable / Flooring / Floor Heating / Dishwasher / Bathroom dryer / WIC / 2 Toilets		

Building Information			
Completion	Oct, 2022	Earthquake Resistance	New
Structure	Wooden, 3 story		
Car Parking	( Included )		
Bicycle Parking	-		
Music Instrument	Negotiable	Pet	Negotiable
Facilities	House / Newly-built (~7 y/o)		

\*The actual Layout & Size may differ slightly from this floor plans & pictures.



HOUSEREP TOKYO INC.

ハウズレップトーキョー株式会社

#301, 1-4-15, Hiroo, Shibuya-ku, Tokyo 150-0012, Japan

+81 (0)3 6427 5860 inquiry@housserep-tokyo.com

Transaction Type : Intermediate

Agent Fee : 1 month + tax

Website : www.housserep-tokyo.com



Remarks
Renters Insurance : Required / Parking : Electric Vehicle charger: extra charge