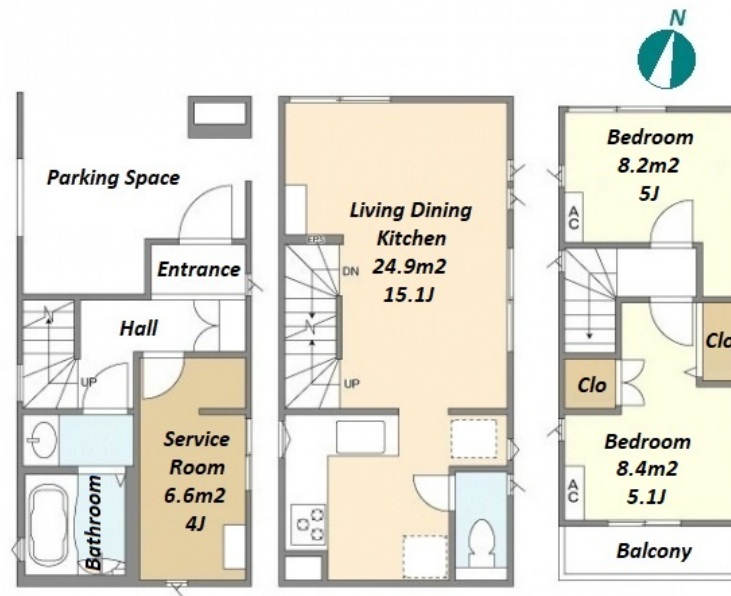
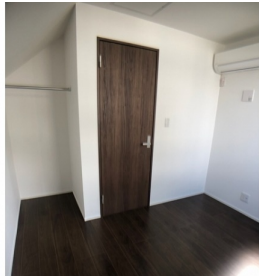


| | | | | | |
|---------------|---|----------|-------|--------|---|
| Property Name | KOLET KAMEARI #09 | Unit No. | TYPE | Access | Kameari Station on JR Joban Line (13 min) |
| | | | House | | |
| Address | 3-13-11, Nishikameari, Katsushika-Ku, Tokyo | | | | |



Lease Conditions

| | | | |
|----------------|--|-----------|---------|
| LAYOUT | 2 BR+S | | |
| SIZE | 67.53 m ² /726.88 ft ² | | |
| RENT | JPY 213,000 / month | | |
| Management Fee | - | | |
| Deposit | 2 months | Key Money | 1 month |
| Lease Term | Standard lease for 24 months | | |
| Available | Now | | |
| Renewal Fee | 1 month | | |
| Agent Fee | 1 month + tax | | |
| Other Info | Guarantor Company : TBC / Free rent / Air-Con / Separated Toilet / Balcony / Internet (Extra Charge) / Penalty Fee for Early Cancellation / Musical Instrument Negotiable / CS/CATV / Flooring / Floor Heating / Dishwasher / Bathroom dryer | | |

Building Information

| | | | |
|------------------|---|-----------------------|--|
| Completion | Jul, 2023 | Earthquake Resistance | New |
| Structure | Wooden, 3 story | | |
| Car Parking | (Included) | | |
| Bicycle Parking | (Included) | | |
| Music Instrument | Negotiable | Pet | Negotiable * additional 2month deposit |
| Facilities | Motorcycle Parking ((Included)) / House / Delivery box / Newly-built (~1 y/o) | | |

Remarks

Renters Insurance : Required / Room cleaning fee: 72,633 yen (when moving out)
 AC cleaning fee: 44,000 yen (when moving out) / Pet : additional 2month deposit

*The actual Layout & Size may differ slightly from this floor plans & pictures.



HOUSEREP TOKYO INC.

ハウズレップトーキョー株式会社

#301, 1-4-15, Hiroo, Shibuya-ku, Tokyo 150-0012, Japan

+81 (0)3 6427 5860 inquiry@housserep-tokyo.com

Transaction Type : Intermediate

Agent Fee : 1 month + tax

Website : www.housserep-tokyo.com

