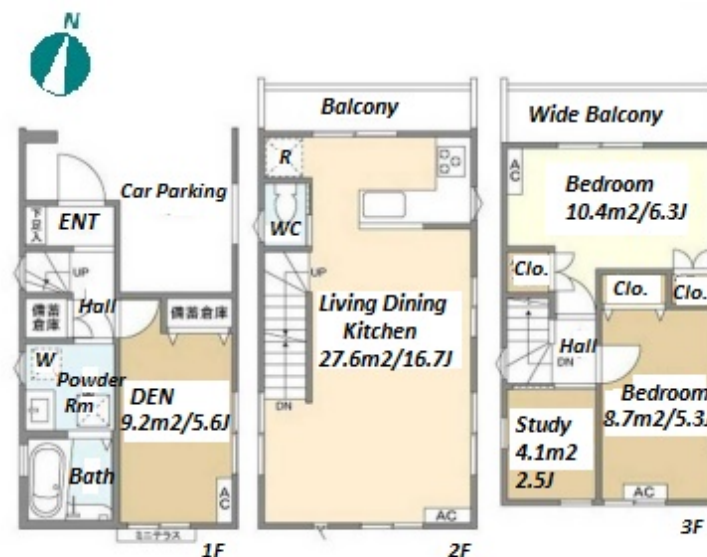
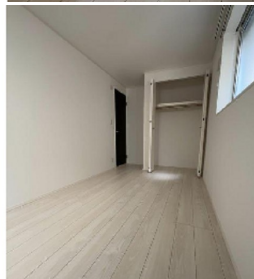
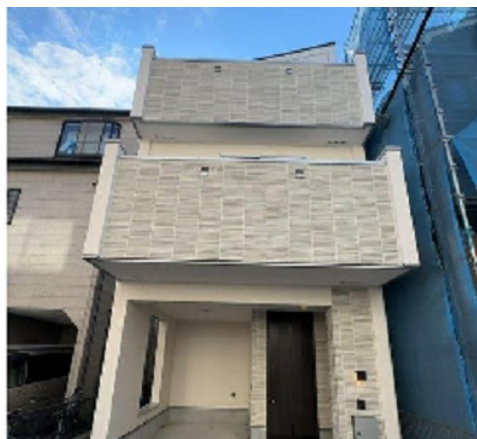


Property Name	KOLET YAGUCHINOWATASHI #02	Unit No.	TYPE	Access	Kamata Station on JR Keihin Tohoku Line (14 min)
			House		
Address	3-11-13, Higashiyaguchi, Ota-Ku, Tokyo				



## Lease Conditions

LAYOUT	2 BR+S+Den		
SIZE	80.58 m²/867.35 ft²		
RENT	JPY 270,000 / month		
Management Fee	-		
Deposit	2 months	Key Money	-
Lease Term	Standard lease for 24 months		
Available	Now		
Renewal Fee	1 month		
Agent Fee	1 month + tax		
Other Info	Guarantor Company : TBC / No Key Money / Air-Con / Separated Toilet / Internet (Extra Charge) / Penalty Fee for Early Cancellation / Musical Instrument Negotiable / Flooring / Dishwasher / Bathroom dryer		

## Building Information

Completion	Dec, 2022	Earthquake Resistance	New
Structure	Wooden, 3 story		
Car Parking	( Included )		
Bicycle Parking	-		
Music Instrument	Negotiable	Pet	Negotiable
Facilities	House / Delivery box / Newly-built (~7 y/o)		

## Remarks

Renters Insurance : Required / Parking : Electric Vehicle charger: extra charge

\*The actual Layout & Size may differ slightly from this floor plans & pictures.



HOUSEREP TOKYO INC.

ハウスレップトーキョー株式会社

#301, 1-4-15, Hiroo, Shibuya-ku, Tokyo 150-0012, Japan

+81 (0)3 6427 5860

inquiry@housserep-tokyo.com

Transaction Type : Intermediate

Agent Fee : 1 month + tax

Website : www.housserep-tokyo.com

