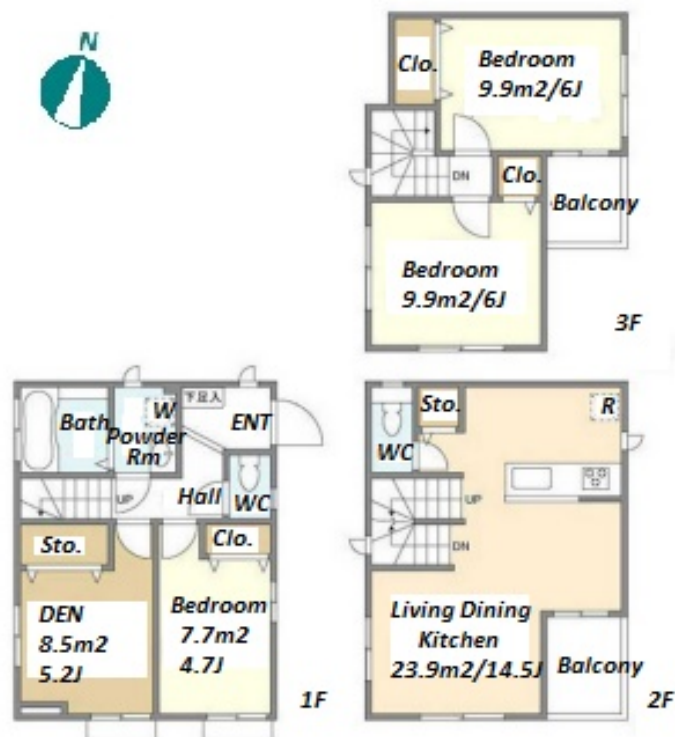
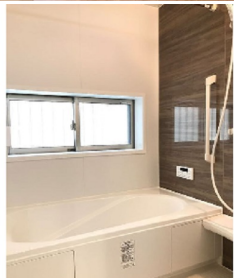
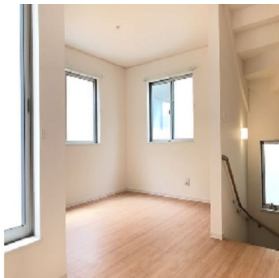


Property Name	KOLET UMEJIMA	Unit No.	TYPE	Access	Umejima Station on Tobu Isesaki Line (14 min)
			House		
Address	3-15-12, Umeda, Adachi-Ku, Tokyo				



Lease Conditions

LAYOUT	3 BR+Den		
SIZE	88.79 m²/955.72 ft²		
RENT	JPY 195,000 / month		
Management Fee	-		
Deposit	2 months	Key Money	1 month
Lease Term	Standard lease for 24 months		
Available	Now		
Renewal Fee	1 month		
Agent Fee	1 month + tax		
Other Info	Guarantor Company : TBC / Air-Con / Separated Toilet / Balcony / Internet (Extra Charge) / Penalty Fee for Early Cancellation / Musical Instrument Negotiable / Flooring / Dishwasher / Bathroom dryer / 2 Toilets		

Building Information

Completion	May, 2022	Earthquake Resistance	New
Structure	Wooden, 3 story		
Car Parking	(Included)		
Bicycle Parking	-		
Music Instrument	Negotiable	Pet	Negotiable
Facilities	House / Delivery box / Newly-built (~7 y/o)		

Remarks

Renters Insurance : Required

*The actual Layout & Size may differ slightly from this floor plans & pictures.



HOUSEREP TOKYO INC.

ハウスレップトーキョー株式会社

#301, 1-4-15, Hiroo, Shibuya-ku, Tokyo 150-0012, Japan

+81 (0)3 6427 5860 inquiry@housserep-tokyo.com

Transaction Type : Intermediate

Agent Fee : 1 month + tax

Website : www.housserep-tokyo.com

