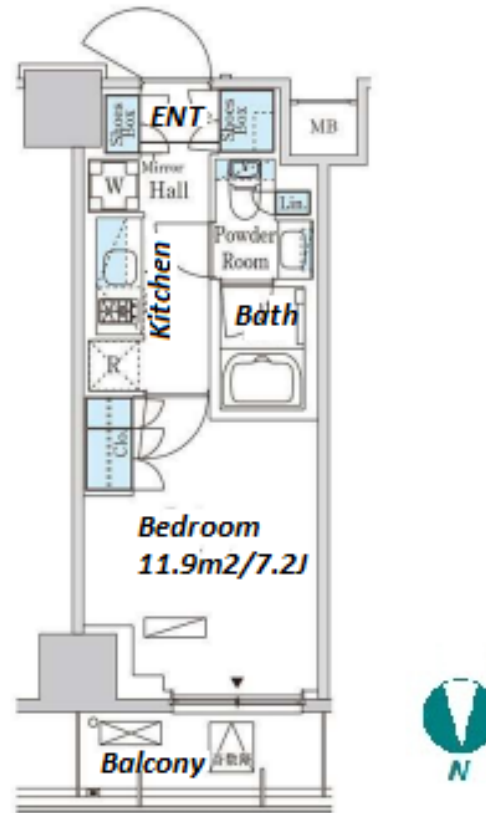
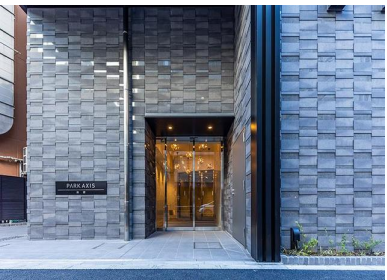


Property Name	PARK AXIS IKEBUKURO	Unit No.	1204	TYPE	Apt.	Access	Ikebukuro Station on JR Yamanote Line (5 min)
Address	3-22-9, Nishiikebukuro, Toshima-Ku, Tokyo						

## Modern High-rise Apt. in Ikebukuro



\*The actual Layout & Size may differ slightly from this floor plans & pictures.

Lease Conditions			
LAYOUT	Studio		
SIZE	25.42 m²/273.61 ft²		
RENT	JPY 141,000 / month		
Management Fee	JPY10,000/month		
Deposit	2 months	Key Money	-
Lease Term	Standard lease for 24 months		
Available	Early, Mar, 2024		
Renewal Fee	1 month		
Agent Fee	1 month + tax		
Other Info	Key Replacement Fee : JPY15,000 Tax not included / Guarantor Company : TBC / No Key Money / Free rent / Auto lock / Air-Con / Separated Toilet / Balcony / Penalty Fee for Early Cancellation / Musical Instrument Negotiable / Flooring / Bathroom dryer		

Building Information			
Completion	Dec, 2021	Earthquake Resistance	New
Structure	RC, 19 story		
Car Parking	for 1 space JPY38,000 + tax / month		
Bicycle Parking	for 1 space ( Included )		
Music Instrument	Negotiable	Pet	Allowed
Facilities	Motorcycle Parking (TBC) / Delivery box / Elevator / High-rise		

Remarks
Renters Insurance : Required / Bicycle parking : Registration fee: JPY.1,000+tax / Pet:additional deposit ( 1 month )



**HOUSEREP TOKYO INC.**

ハウスレップトーキョー株式会社

#301, 1-4-15, Hiroo, Shibuya-ku, Tokyo 150-0012, Japan

+81 (0)3 6427 5860

inquiry@housserep-tokyo.com

Transaction Type : Intermediate

Agent Fee : 1 month + tax

Website : www.housserep-tokyo.com

