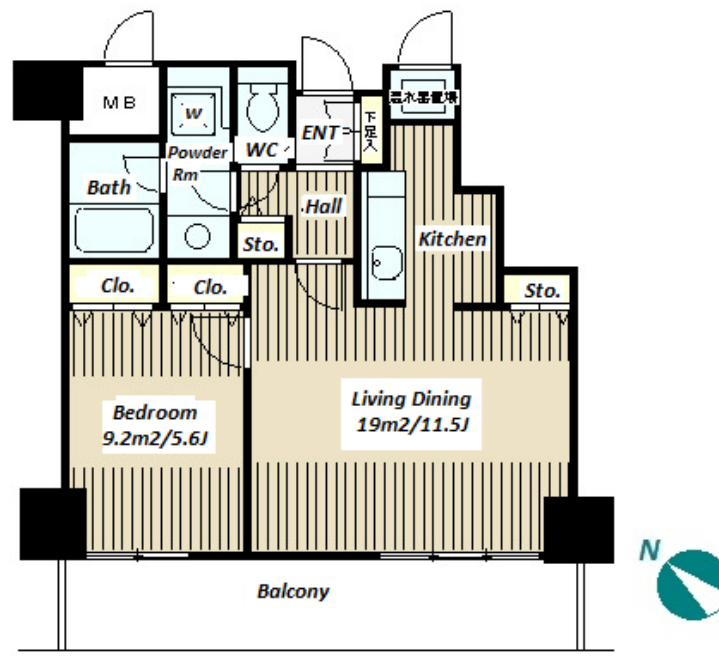


Property Name	TRESTAGE MEGURO	Unit No.	TYPE	Access	Meguro Station on JR Yamanote Line (9 min) Fudoumae Station on Tokyu Meguro Line (10 min)
		204	Apt.		
Address	2-22-11, Shimomeguro, Meguro-Ku, Tokyo				

High-rise Apt. in Meguro, along Yamate Street



Lease Conditions			
LAYOUT	1 BR		
SIZE	52.25 m²/562.41 ft²		
RENT	JPY 217,000 / month		
Management Fee	-		
Deposit	2 months	Key Money	1 month
Lease Term	Standard lease for 24 months		
Available	Now		
Renewal Fee	1 month		
Agent Fee	1 month + tax		
Other Info	Key Replacement Fee : JPY20,000 Tax not included / Guarantor Company : TBC / Auto lock / Air-Con / Separated Toilet / Balcony / Musical Instrument Negotiable / CS/CATV / Flooring / IH Stoves / Bathroom dryer		

Building Information			
Completion	Feb, 2004	Earthquake Resistance	New
Structure	RC, 18 story		
Car Parking	JPY38,000 ~ 40,000 + tax / month		
Bicycle Parking	N/A		
Music Instrument	Negotiable	Pet	-
Facilities	Motorcycle Parking (JPY3,000 ~ 5,000 + tax / month) / Delivery box / Elevator / High-rise		

*The actual Layout & Size may differ slightly from this floor plans & pictures.



HOUSEREP TOKYO INC.

ハウスレップトーキョー株式会社

#301, 1-4-15, Hiroo, Shibuya-ku, Tokyo 150-0012, Japan

+81 (0)3 6427 5860

inquiry@houserep-tokyo.com

Transaction Type : Intermediate

Agent Fee : 1 month + tax

Website : www.houserep-tokyo.com



Remarks
Renters Insurance : Required / Parking : key money: 1 month