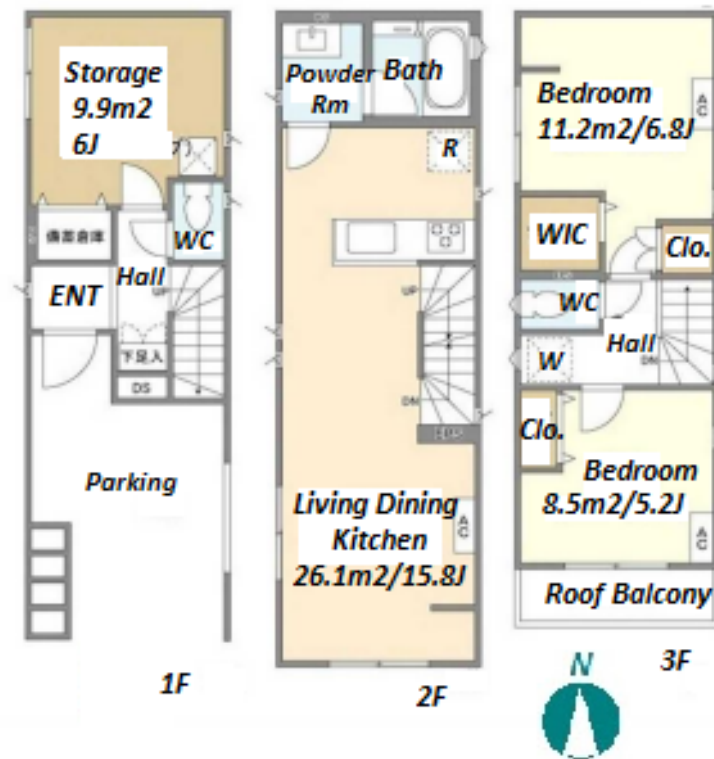


| | | | | | |
|---------------|--|----------|-------|--------|--|
| Property Name | KOLET YOKOHAMA #02 | Unit No. | TYPE | Access | Yokohama Station on JR Keihin Tohoku Line (13 min) Yokohama Station on JR Negishi Line (13 min) |
| | | | House | | |
| Address | 2-13, Miyagaya, Nishi-Ku, Yokohama-Shi, Kanagawa | | | | |



Lease Conditions

| | |
|--------|--|
| LAYOUT | 2 BR+S |
| SIZE | 81.35 m ² /875.64 ft ² |
| RENT | JPY 315,000 / month |

| | | | |
|----------------|--|-----------|---|
| Management Fee | - | | |
| Deposit | 2 months | Key Money | - |
| Lease Term | Standard lease for 24 months | | |
| Available | Now | | |
| Renewal Fee | 1 month | | |
| Agent Fee | 1 month + tax | | |
| Other Info | Guarantor Company : TBC / No Key Money / Free rent / Air-Con / Separated Toilet / Internet (Extra Charge) / Penalty Fee for Early Cancellation / Musical Instrument Negotiable / Roof Balcony / Flooring / Floor Heating / Dishwasher / Bathroom dryer / WIC / 2 Toilets | | |

Building Information

| | | | |
|------------------|---|-----------------------|------------|
| Completion | Nov, 2022 | Earthquake Resistance | New |
| Structure | Wooden, 3 story | | |
| Car Parking | for 1 space (Included) | | |
| Bicycle Parking | - | | |
| Music Instrument | Negotiable | Pet | Negotiable |
| Facilities | House / Delivery box / Newly-built (~7 y/o) | | |

Remarks

Renters Insurance : Required

*The actual Layout & Size may differ slightly from this floor plans & pictures.



HOUSEREP TOKYO INC.

ハウズレップトーキョー株式会社

#301, 1-4-15, Hiroo, Shibuya-ku, Tokyo 150-0012, Japan

+81 (0)3 6427 5860

inquiry@housserep-tokyo.com

Transaction Type : Intermediate

Agent Fee : 1 month + tax

Website : www.housserep-tokyo.com

